

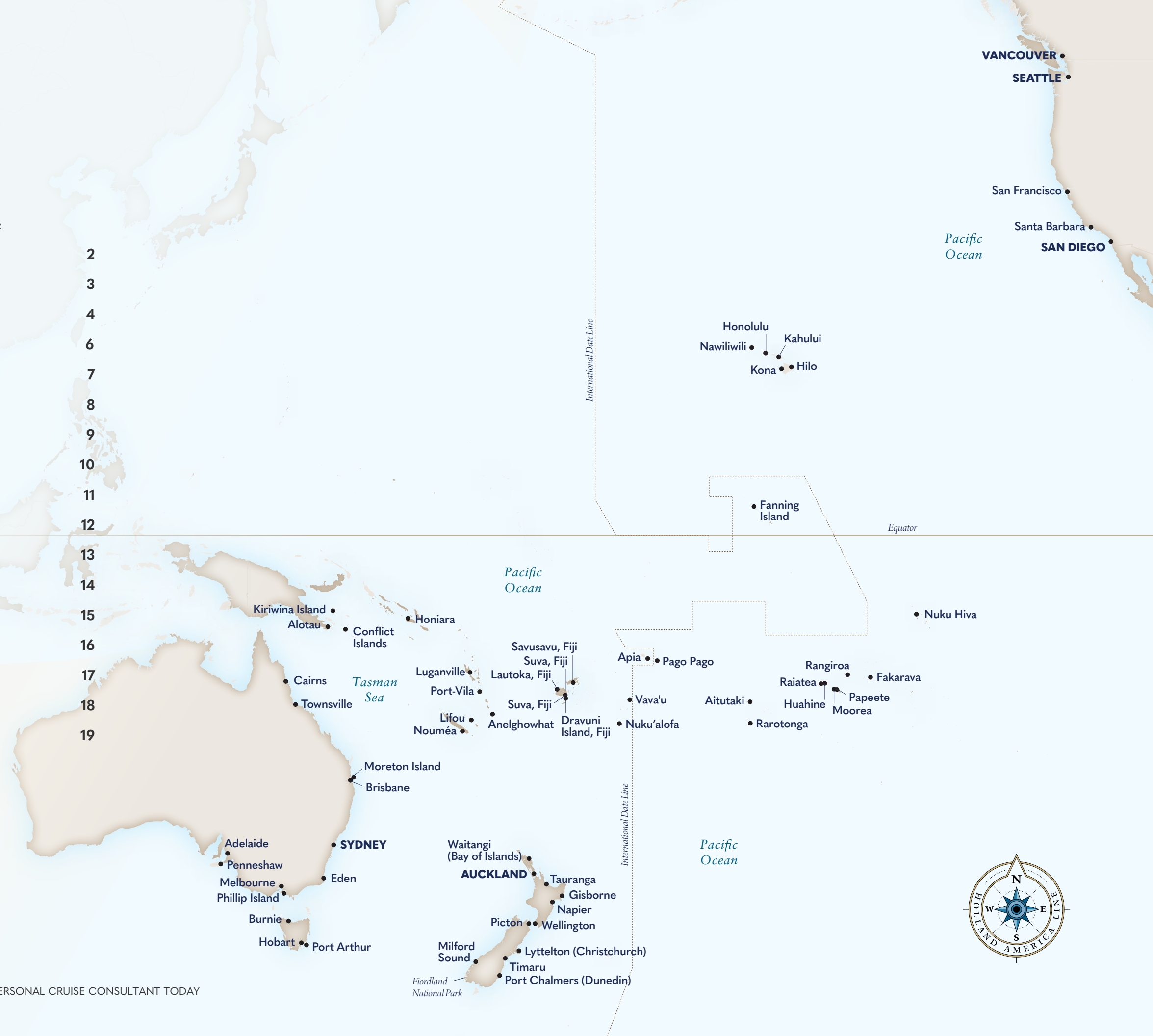
SEPTEMBER 2025–MARCH 2026 CRUISES

Australia, New Zealand & The South Pacific

Holland  America

Contents

TOP REASONS TO CRUISE AUSTRALIA, NEW ZEALAND & THE SOUTH PACIFIC WITH HOLLAND AMERICA	2
NATIONAL PARKS & UNESCO SITES	3
SPECTACULAR SITES OF AUSTRALIA & NEW ZEALAND	4
14-DAY ITINERARIES	6
COLLECTORS' VOYAGES	7
SOUTH PACIFIC LEGENDARY VOYAGES	8
HIDDEN GEMS OF THE SOUTH PACIFIC	9
28-DAY ISLANDS OF THE SOUTH PACIFIC	10
35-DAY HAWAII, TAHITI & THE MARQUESAS	11
51- OR 56-DAY TALES OF THE SOUTH PACIFIC	12
27-DAY & 36-DAY SOUTH PACIFIC CROSSING	13
DESTINATION DINING: FRESH LOCAL INGREDIENTS	14
DINING, BARS & LOUNGES	15
ACTIVITIES DAY & NIGHT	16
SPA "AHHH"	17
HAVE IT ALL EARLY BOOKING BONUS	18
TERMS & CONDITIONS	19



Top Reasons TO CRUISE AUSTRALIA, NEW ZEALAND & THE SOUTH PACIFIC WITH HOLLAND AMERICA



IMMERSIVE ITINERARIES

Unpack once and visit iconic landmarks, hidden gems, and rare and renowned treasures across Australia, New Zealand, and the South Pacific.



UNIQUE NATURAL WONDERS

Transport yourself to Middle Earth amid Australia & New Zealand's jaw-dropping national parks, geothermal hot springs, and world-famous wildlife.



UNESCO WORLD HERITAGE SITES

Sail past the Sydney Opera House, uncover Tasmania's penal past, hike the world's oldest tropical rain forest and snorkel the Great Barrier Reef.



AUTHENTIC CULTURAL EXPERIENCES

Tour a historic New Zealand seaport, hand-feed a kangaroo, visit a working Tasmanian sheep farm and call on a genuine Māori *marae* (meeting ground).



FRESH LOCAL FAVORITES

Savor regional specialties such as Sydney rock oysters, sheep's cheese, Tasmanian meat pies and more sourced directly from the port to your plate.



AWARD-WINNING, PERSONALIZED SERVICE

Enjoy warmly attentive service and experience the grandeur of cruising with the personal care and connection that make anyplace feel like home.



National Parks & UNESCO SITES

NATIONAL PARKS

Marvel at Fiordland National Park's dramatic landscapes, Rocky Cape National Park's Aboriginal caves, Coorong National Park's sparkling sand dunes and so much more.

UNESCO WORLD HERITAGE SITES

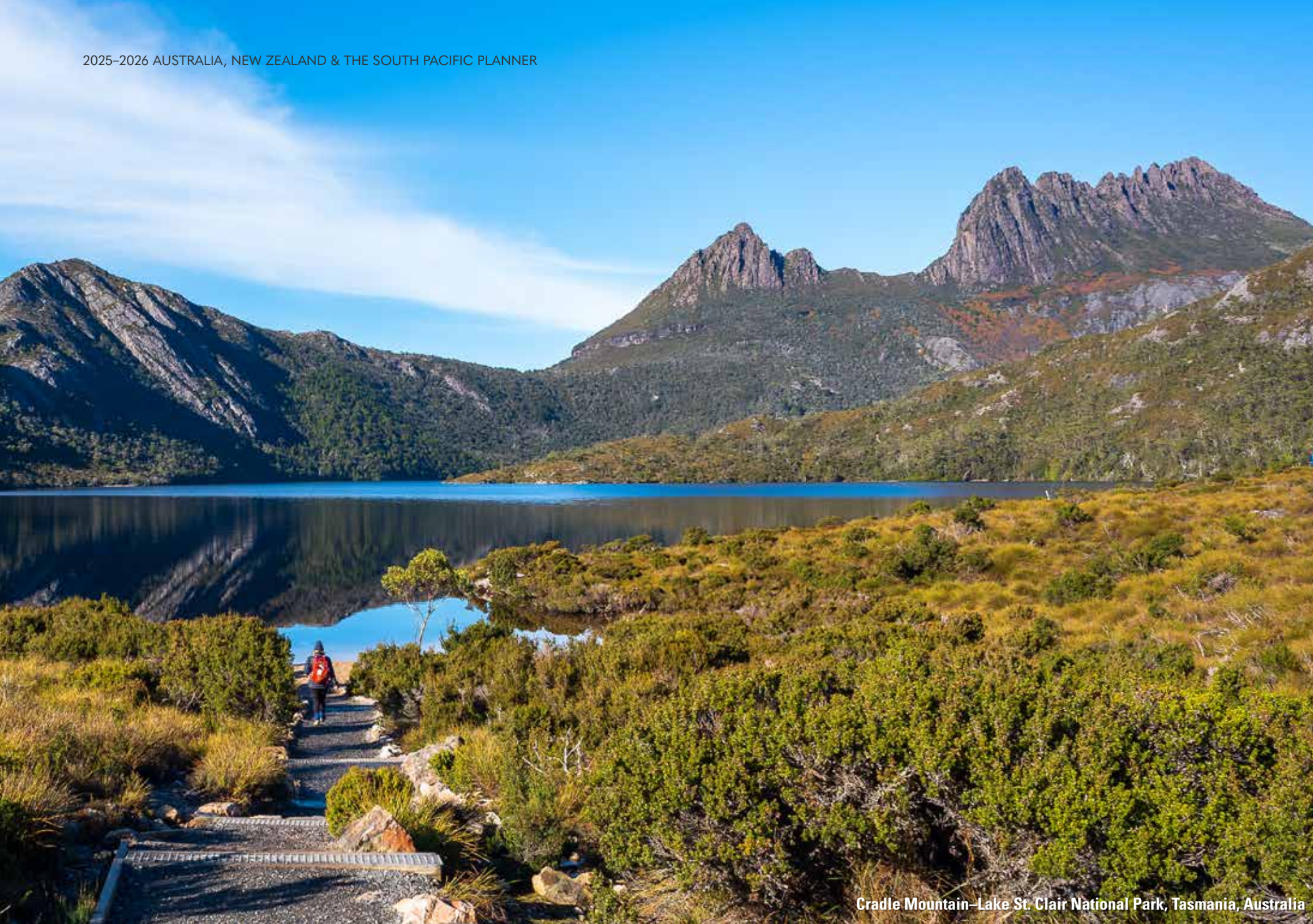
Cruise New Zealand's mesmerizing Milford Sound, see the world's tallest flowering plants in Tasmania or hike Earth's oldest tropical rain forest in Queensland.

MAGNETIC ISLAND NATIONAL PARK

Located just off the coast of Townsville, Australia, this stunning natural reserve is home to rock wallabies, koalas, rainbow lorikeets and other endemic species.

GREAT BARRIER REEF

Sightsee or snorkel your way along the world's largest coral reef complex — a UNESCO World Heritage site — by fixed-wing aircraft or catamaran.



Cradle Mountain-Lake St. Clair National Park, Tasmania, Australia



Koala, Magnetic Island National Park, Queensland, Australia

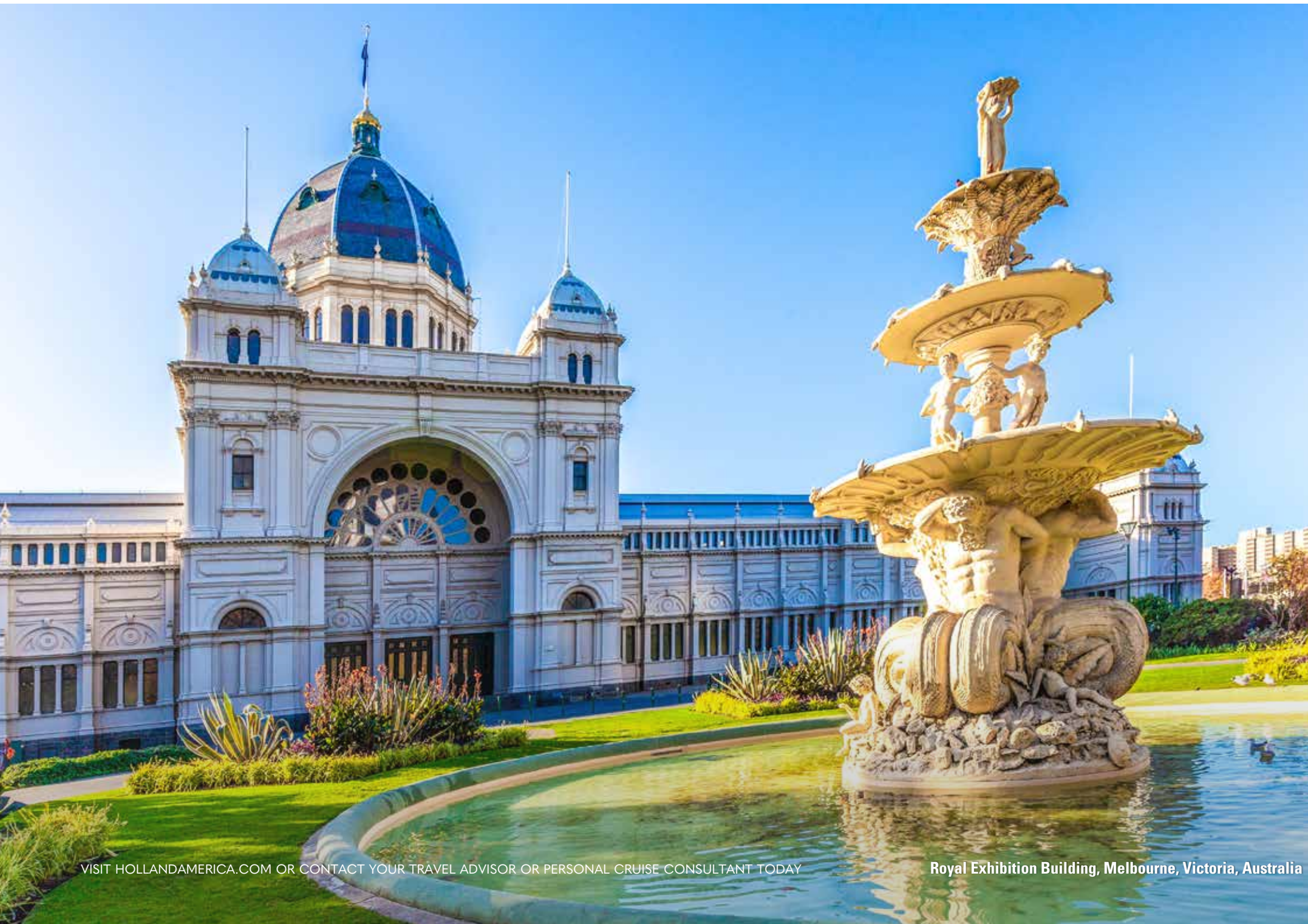


Great Barrier Reef, Australia

Spectacular Sites

OF AUSTRALIA & NEW ZEALAND

Sail into Sydney's incomparable harbor, with its signature opera house perched like a glorious white bird on its shores. Admire the harmonious fusion of nature and architecture on display at Melbourne's UNESCO-listed Royal Exhibition Building and Carlton Gardens. And take in 360° views of Auckland's picturesque marinas, modern skyscrapers and restored Victorian buildings from atop its magnificent 1,076-foot Sky Tower.



Royal Exhibition Building, Melbourne, Victoria, Australia



Sydney Opera House, Sydney, New South Wales, Australia



Sky Tower, Auckland, New Zealand

FEATURED

14-DAY SOUTH AUSTRALIA HOLIDAY

ROUNDRIP SYDNEY

Noordam

2025: Dec 21*

- Explore Australia's southerly wonders on this roundtrip holiday sailing
- See Tasmania's namesake devils during a late-night stay in Hobart
- Visit a koala conservation reserve and explore Melbourne by electric bike



Mt. Wellington, Wellington Park, Tasmania, Australia

14-DAY ITINERARIES



Russell Falls, Mt. Field National Park, Tasmania, Australia



14-DAY AUSTRALIA & NEW ZEALAND

Sydney to Auckland

Noordam
Nov 9, 2025



14-DAY AUSTRALIA & NEW ZEALAND

Auckland to Sydney

Noordam
Nov 23, 2025



14-DAY NEW ZEALAND DISCOVERY

Roundtrip Sydney

Noordam
Dec 7, 2025



14-DAY AUSTRALIA & NEW ZEALAND

Auckland to Sydney

Noordam
Feb 1, 2026



14-DAY AUSTRALIA & NEW ZEALAND

Sydney to Auckland

Noordam
Feb 15, 2026



14-DAY AUSTRALIA & NEW ZEALAND

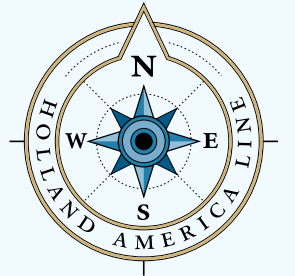
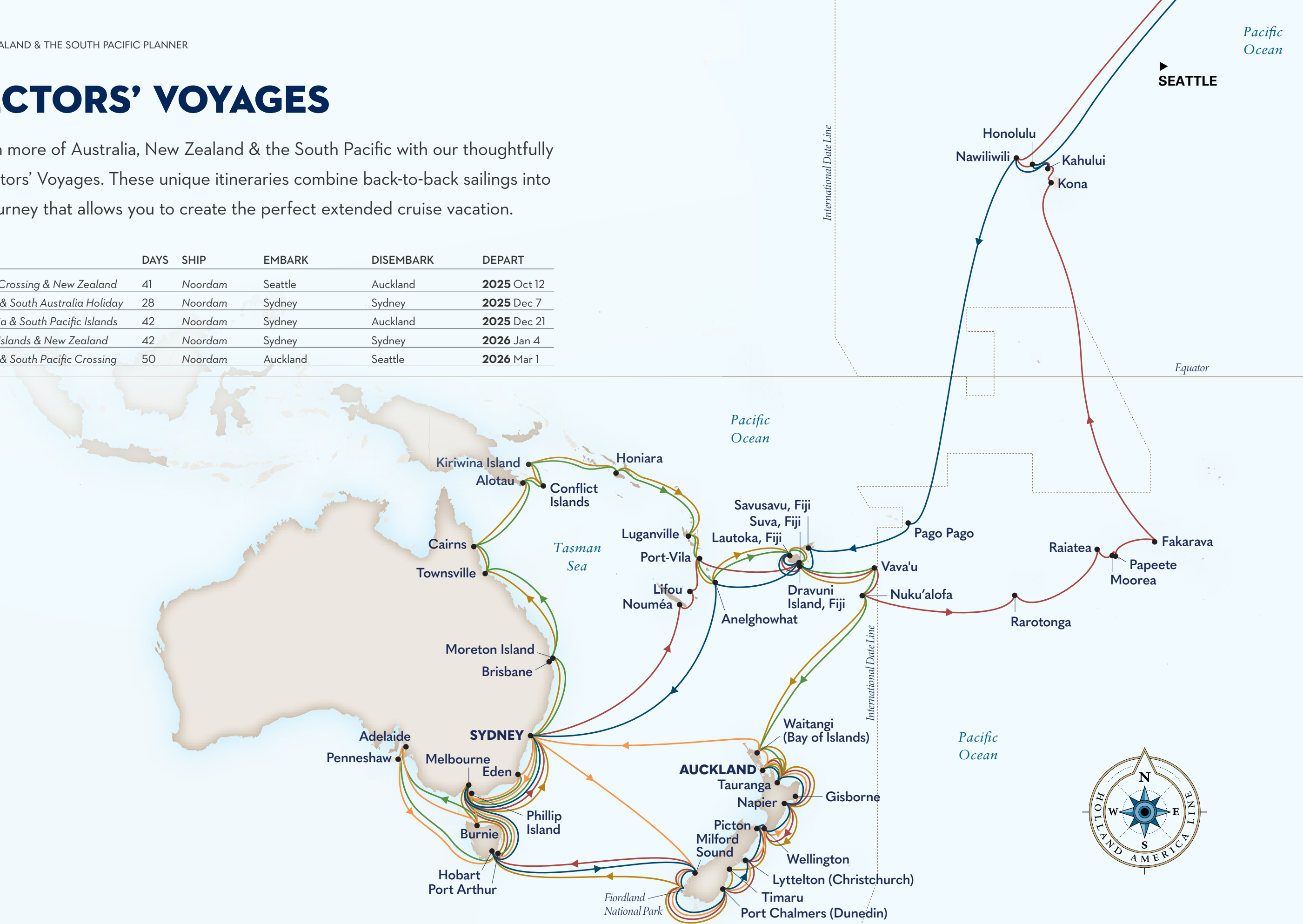
Auckland to Sydney

Noordam
Mar 1, 2026

COLLECTORS' VOYAGES

Experience even more of Australia, New Zealand & the South Pacific with our thoughtfully designed Collectors' Voyages. These unique itineraries combine back-to-back sailings into one seamless journey that allows you to create the perfect extended cruise vacation.

CRUISE	DAYS	SHIP	EMBARK	DISEMBARK	DEPART
South Pacific Crossing & New Zealand	41	Noordam	Seattle	Auckland	2025 Oct 12
New Zealand & South Australia Holiday	28	Noordam	Sydney	Sydney	2025 Dec 7
South Australia & South Pacific Islands	42	Noordam	Sydney	Auckland	2025 Dec 21
South Pacific Islands & New Zealand	42	Noordam	Sydney	Sydney	2026 Jan 4
New Zealand & South Pacific Crossing	50	Noordam	Auckland	Seattle	2026 Mar 1



SOUTH PACIFIC

Legendary Voyages

Unpack once and island-hop your way through the South Pacific, where Polynesian and French cultures meet under impossibly blue skies. Savor fresh-caught fish, ube rolls, tropical fruits and more. Take part in long-standing cultural traditions and marvel at the islands' thatched-roof bungalows, aquamarine waters, white-sand islets, and kaleidoscopic coral reefs.



Hidden Gems

OF THE SOUTH PACIFIC

VANUATU

Witness a fire-walking demonstration, visit a traditional Keamu village, admire pristine freshwater sinkholes and see the UNESCO-listed Chief Roi Mata's Domain.

COOK ISLANDS

The largest of the Cook Islands, Rarotonga, is home to towering mountains, cascading waterfalls, stunning shorelines and warm Polynesian hospitality.

SOLOMON ISLANDS

The Solomon Islands' Guadalcanal boasts a bustling central market, dense tropical rain forests, enchanting birdlife and fascinating World War II history.

NEW CALEDONIA

In addition to boasting old-growth forests and vanilla plantations, this French overseas territory is home to coral-rich lagoons — a UNESCO World Heritage site.

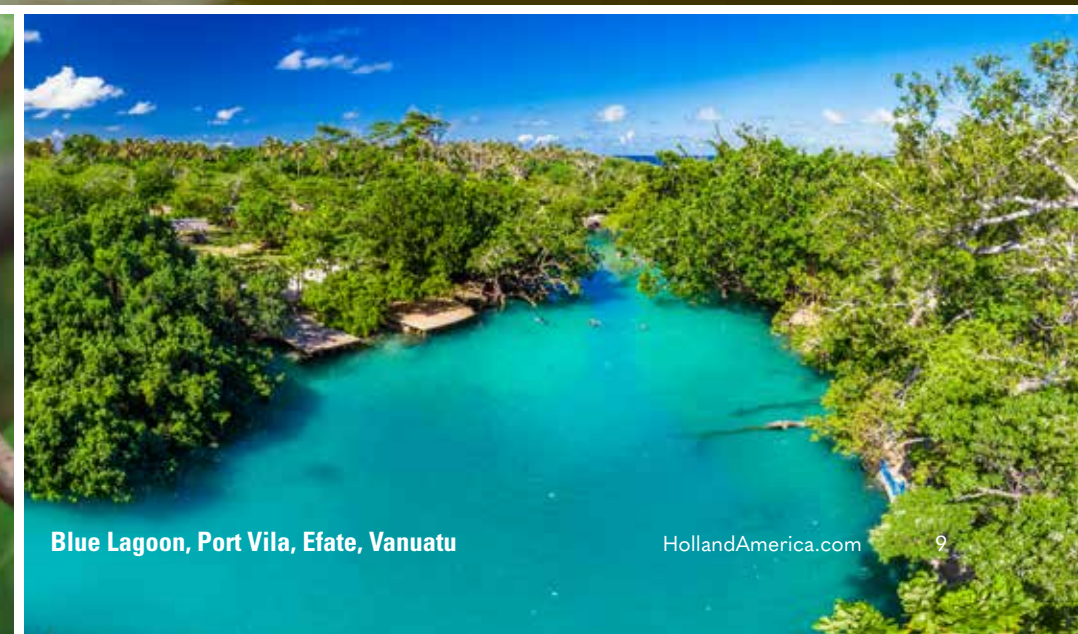
VISIT [HOLLANDAMERICA.COM](https://www.hollandamerica.com) OR CONTACT YOUR TRAVEL ADVISOR OR PERSONAL CRUISE CONSULTANT TODAY



Wigmore's Waterfall, Rarotonga, Cook Islands



Yellow-faced myna, Guadalcanal, Solomon Islands



Blue Lagoon, Port Vila, Efate, Vanuatu



NEW 28-DAY ISLANDS OF THE SOUTH PACIFIC: SYDNEY TO AUCKLAND

SYDNEY TO AUCKLAND *Noordam* **2026: Jan 4**

- Cruise the east coast of Australia en route to Vanuatu, Fiji, Tonga and more
- Snorkel coral reefs, visit a traditional island village and relax on white-sand shores
- Call on New Zealand's natural wonders, historic Māori sites and so much more



Hell's Gate Geothermal Reserve, Rotorua, New Zealand



35-DAY HAWAII, TAHITI & THE MARQUESAS

ROUNDRIP SAN DIEGO

Nieuw Amsterdam

2026: Feb 14

- Visit 4 Hawaiian isles and cross the International Date Line and equator
- Call on the South Pacific's beloved havens and secluded atolls alike
- Drift into "island time" during overnights in Raiatea, Tahiti and Moorea



Hana Coast, Maui, Hawaii



51- OR 56-DAY TALES OF THE SOUTH PACIFIC

VANCOUVER TO SAN DIEGO *Zaandam* **2025: Sep 24**

ROUNDTRIP SAN DIEGO *Zaandam* **2025: Sep 29**

- Discover the coastlines, cultures and cuisine of more than 20 different islands
- Explore Hawaii’s volcanic landscapes, lush rain forests and enduring traditions
- Overnight amid Honolulu’s diverse ambiance and Tahiti’s black-sand beaches





27-DAY SOUTH PACIFIC CROSSING SEATTLE TO SYDNEY

SEATTLE TO SYDNEY

Noordam

2025: Oct 12

- Traverse hemispheres and continents on this transpacific journey
- Experience Honolulu’s “spirit of aloha” during an extended two-day stay
- Immerse yourself in Fiji’s gorgeous landscapes and rich island heritage



Note: This sailing is 28 calendar days in length.

36-DAY SOUTH PACIFIC CROSSING SYDNEY TO SEATTLE

SYDNEY TO SEATTLE

Noordam

2026: Mar 15

- Cruise from Australia to North America via stunning South Pacific seas
- Admire coral reefs in New Caledonia, Vanuatu, Fiji, Tonga and the Cook Islands
- Overnight in Tahiti, sip Kona coffee and discover Honolulu’s bustling island charm



Note: This sailing is 35 calendar days in length.



Fakarava, Tuamotu Islands, French Polynesia

Destination Dining

FRESH LOCAL INGREDIENTS



New Zealand Green-Lipped Mussels



Pavlova Meringue with Fresh Berries

At Holland America, our cuisine goes beyond the plate. We now offer more than 80 varieties of fresh fish sourced locally from across our worldwide network via our first-of-its-kind Global Fresh Fish Program. With native fresh fish and ingredients sourced directly from local farmers and fisheries, our destination dining tells the story of each region through its unique flavors — from New Zealand green-lipped mussels to Tasmanian ocean trout.

Looking for even more authentic tastes of the region?

Our immersive shore excursions include a number of fun and delicious culinary tours. Visit a Tasmanian truffle farm, call on an Australian eucalyptus distillery, sample Fijian Nama “sea grapes” or taste your way through New Zealand’s world-renowned wines.



Barramundi Steak

Dining

BARS & LOUNGES

Find everything from fresh seafood, specialty coffee, and craft cocktails to burgers, pasta, and fresh-made desserts. You can even treat yourself to breakfast in bed or a late-night snack with our complimentary 24-hour room service.

COMPLIMENTARY DINING OPTIONS

- | | |
|-------------|----------------------|
| Dining Room | Lido Market |
| Dive-In | 24-hour room service |

SPECIALTY RESTAURANTS*

- | | |
|-----------|----------------|
| Canaletto | Pinnacle Grill |
|-----------|----------------|

COFFEE & TREATS*

- Explorations Café

BARS & LOUNGES*

- | | |
|-------------------|--------------|
| Crow's Nest | MIX |
| Explorer's Lounge | Ocean Bar |
| Gallery Bar | Pinnacle Bar |
| Lido Bar | Sea View Bar |



Dining Room



Spaghetti alle Vongole



Cream Puff au Craquelin with Chocolate



Offerings vary by ship. Scan here to compare dining, activities and other amenities across our fleet.

[CLICK HERE TO LEARN MORE](#)

*For a nominal fee.

Activities

DAY & NIGHT

Begin your day with a meditative Tai Chi session on deck, a spin class in the Fitness Center or a stroll around our teak Promenade Deck. Make new friends on the pickleball court or paint a masterpiece at one of our guided painting sessions. Once the sun goes down, try your luck in the Casino, catch an interactive game show or dance the night away at our award-winning music clubs.

MUSIC CLUBS

Rolling Stone
LOUNGE

THIRD
AVENUE
WEST

billboard
onboard

ONLY ON THE WORLD STAGE

&COMPANY

AND SO MUCH MORE

SPORTS & ACTIVITIES

- | | |
|-------------------------|-------------------------|
| Acrylic Paint on Canvas | Pickleball |
| Adult Coloring | Punch Needle Embroidery |
| Cornhole | Shuffleboard |
| Flower Arranging | Table Tennis |
| Modern Brush Lettering | Tai Chi |
| Origami | Watercolor Paint |



Offerings vary by ship. Scan here to compare dining, activities and other amenities across our fleet.

CLICK HERE TO
LEARN MORE



Tai Chi on deck



Sport Court



Billboard Onboard

Spa "Ahhh"

PAMPER YOURSELF AT SEA

Recharge in secluded luxury at our outdoor Retreat or indulge in our Thermal Suite and Hydropool at the Spa & Salon. While you soak in the sun, let our attentive crew bring you a cooling drink as you sit back and relax in your private sanctuary.

SPA SERVICES

- | | |
|----------------------|---------------------------|
| Acupuncture Services | Massage & Body Therapies |
| Couples' Treatments | Medi-Spa Treatments |
| Facial Treatments | Teeth Whitening |
| Hair & Nail Services | Thermal Suite & Hydropool |

WELLNESS & FITNESS

- | | |
|---------------------------|--------------------------|
| Body Composition Analysis | Nutritional Consultation |
| Circuit Training | Pain Management Workshop |
| Fitness Center | Personal Trainers |
| Guided Meditation | Sport Court |



Offerings vary by ship. Scan here to compare dining, activities and other amenities across our fleet.

CLICK HERE TO **LEARN MORE**



Spa & Salon



Lido Pool



Fitness Center

LIMITED TIME OFFER

Early Booking *Bonus* Have it all.

Receive 60% off top amenities with the fully refundable Have It All Early Booking Bonus!* Enjoy all the benefits of our standard Have It All package, including Shore Excursion and Specialty Dining credit, plus free prepaid Crew Appreciation, our Low Price Guarantee*, and free upgrades to the Elite Beverage Package and Premium Wi-Fi. Availability is limited, so book before this offer sails away!

Three Sisters, Blue Mountains National Park, New South Wales, Australia

BOOK EARLY TO RECEIVE OUR BEST VALUE ON TOP AMENITIES



FREE PREPAID CREW APPRECIATION

Crew Appreciation, or stateroom gratuities, is covered for you (a value of us\$17 per day for Interior, Ocean View, and Verandah staterooms and us\$19 per day for suites) to recognize the efforts of a wide variety of crew members who contribute to the experiences of all our guests.



FREE UPGRADE PREMIUM WI-FI

Stay connected throughout your journey. Surf the web, use social media, check email, and send messages to family and friends.



FREE UPGRADE ELITE BEVERAGE PACKAGE

Choose from a large selection of wine, beer, spirits, and cocktails, plus non-alcoholic options such as sodas, coffees, and more – with service charges included.



SPECIALTY DINING

Enhance your cruise with award-winning specialty dining at Canaletto, Tamarind or the famed Pinnacle Grill – with service charges included.



LOW PRICE GUARANTEE

If you find a lower, identical fare for your cruise before this offer expires, you are eligible to receive the difference in the form of an Onboard Credit, stateroom upgrade or more!



SHORE EXCURSIONS

The longer you cruise, the more you can explore!

- 6-9 days and get a us\$100 Shore Excursion Credit
- 10-20 days and get a us\$200 Shore Excursion Credit
- 21+ days and get a us\$300 Shore Excursion Credit

Click to see our **HAVE IT ALL EARLY BOOKING BONUS ITINERARIES**



Book Today – Limited-Time Offer

Early Booking *Bonus* Have it all.

Up to 3 Nights' Specialty Dining

Includes service charges; varies by voyage

Up to us\$300 Shore Excursion Credit

Varies by voyage length

FREE UPGRADE: Elite Beverage Package

Includes service charges

FREE UPGRADE: Premium Wi-Fi

FREE Prepaid Crew Appreciation
Gratuities

LOW PRICE GUARANTEE
U.S. & Canada only

See page 19 for Terms & Conditions.

TERMS & CONDITIONS

RESERVATIONS

Accommodations are limited. If you use a travel agent/travel agency (“TA”) to book your reservation, you shall pay deposits and payments for Holland America Line’s (“HAL”) services to such TA. HAL will issue travel documents only if and when it has received full payment from TA. HAL will make any refunds to the applicable TA based only on the amount HAL actually received, less any applicable cancellation fees and charges; guest is responsible for obtaining any refund monies from TA.

DEPOSIT & FINAL PAYMENT REQUIREMENTS

Deposit is required at the time of cruise booking and final payment of balance must be received no later than 90 or 120 days prior to departure (see below for details).

CANCELLATIONS

Our cancellation policy allows you to cancel your 2025–2026 Australia & New Zealand cruise 90+ days prior to departure, depending on the cruise, and receive a full refund. If you cancel your 2025–2026 Australia & New Zealand cruise 89 days or less prior to departure, depending on the cruise, you are required to pay a cancellation fee (including 3rd and 4th berths) as set forth below. Such fees are based on the fare paid, excluding Taxes, Fees & Port Expenses (“TFPE”), transfers, surcharges, shore and land excursions, and most pre-purchased gift(s) and/or special service(s). See more details in the Cruise Contract. For 2025–2026 Australia & New Zealand cruises, the cancellation fee amount varies based on the length of sailing and timing of cancellation as follows:

2025–2026 AUSTRALIA & NEW ZEALAND – 14-DAY CRUISES & 28-DAY NEW ZEALAND & SOUTH AUSTRALIA HOLIDAY COLLECTORS’ VOYAGE	
Number of Days Before Sailing Date on Which Guest Cancels Cruise	Amount of Cancellation Fee
90+ days’ notice	0%
89–83 days’ notice	an amount equal to deposit requirement
82–46 days’ notice	50% of gross fare
45 days’ or less notice	100% of gross fare

Our cancellation policy allows you to cancel your 2025–2026 South Pacific Legendary or Collectors’ Voyage* 120+ days prior to departure, depending on the cruise, and receive a full refund. If you cancel your 2025–2026 South Pacific Legendary or Collectors’ Voyage* 119 days or less prior to departure, you are required to pay a cancellation fee (including 3rd and 4th berths) as set forth below. Such fees are based on the fare paid, excluding Taxes, Fees & Port Expenses (“TFPE”), transfers, surcharges, shore and land excursions, and most pre-purchased gift(s) and/or special service(s). See more details in the Cruise Contract. For 2025–2026 South Pacific Legendary or Collectors’ Voyages*, the cancellation fee amount varies based on the length of sailing and timing of cancellation as follows:

SOUTH PACIFIC LEGENDARY VOYAGES + THE FOLLOWING COLLECTORS’ VOYAGES: 41-DAY SOUTH PACIFIC CROSSING & NEW ZEALAND 42-DAY SOUTH AUSTRALIA & SOUTH PACIFIC ISLANDS 42-DAY SOUTH PACIFIC ISLANDS & NEW ZEALAND 50-DAY NEW ZEALAND & SOUTH PACIFIC CROSSING	
Number of Days Before Sailing Date on Which Guest Cancels Cruise	Amount of Cancellation Fee
120+ days’ notice	0%
119–113 days’ notice	an amount equal to deposit requirement
112–76 days’ notice	50% of gross fare
75 days’ notice	100% of gross fare

Change to arrangements may be subject to change charges. *Excluding the 28-Day *New Zealand & South Australia Holiday* Collectors’ Voyage, which is subject to the 2025–2026 Australia & New Zealand cruises cancellation policy.

CREW APPRECIATION & SERVICE CHARGES

For your convenience, Crew Appreciation will automatically be added to your onboard account to recognize the efforts of a wide variety of crew members in various departments, including those in the Dining, Entertainment, Guest Services, and Galley areas. The amount of the Crew Appreciation is based on your stateroom category and is subject to adjustment at your discretion, except as

otherwise provided in the Crew Appreciation and Service Charge Policy. A Service Charge will automatically be added to optional purchases of beverage packages, drinks, dining room and specialty dining, onboard parties, and other services or amenities provided to guests that are not included in the cruise fare. The Crew Appreciation and Service Charge payments on all vessels in our fleet are pooled and distributed in the form of compensation, including bonuses. For further details, please review our Crew Appreciation and Service Charge Policy.

TAXES, FEES & PORT EXPENSES

“Taxes, Fees & Port Expenses,” or “TFPE” as used by HAL, may include any and all fees, charges, tolls, and taxes imposed on HAL by governmental or quasi-governmental authorities, as well as third-party fees and charges arising from a vessel’s presence in a harbor or port. TFPE may be assessed per guest, per berth, per ton, or per vessel. TFPE are subject to change, and HAL reserves the right to collect any increases in effect at the time of sailing even if the fare has already been paid in full. Advertised fares include Taxes and Fees.

GUESTS WITH DISABILITIES

Holland America Line seeks to accommodate the needs of guests with disabilities, to the extent feasible. Some accommodations require advanced notification. For more information, visit the Accessible Cruising section of our website.

MEDICAL SERVICES

Each of our ships is equipped with limited medical facilities that are staffed by a physician and registered nurses. Unless otherwise indicated in an active HAL policy (for example, the COVID-19 Protection Program), guest will be charged a fee for all medical services and medications obtained on board. If the onboard physician is unable to care for your needs on board, you will be transferred to medical facilities on shore. If your condition will require you to have a special medical apparatus or assistance on board, we must be made aware of that at the time of booking in order to determine whether we can accommodate your needs.

PASSPORTS / VISAS / IMMUNIZATIONS

You are solely responsible for securing and having available all proper documentation for the countries visited on your cruise or land tour and for bringing all necessary travel documents such as passports, visas, proof of citizenship, re-entry permits, minors’ permissions, and medical certificates showing all necessary vaccinations. Guests should check with their TA or the appropriate governmental authority to determine the necessary documents. Guest will be refused boarding or disembarked without recourse or liability for refund, payment, compensation, or credit of any kind if they do not have proper documentation, and they will be subject to any fine or other costs incurred by HAL that result from improper documentation or non-compliance with applicable regulations.

RESPONSIBILITY

All HAL vessels are owned by HAL Antillen N.V. and operated by Holland America Line N.V. in its capacity as general partner of Cruiseport Curaçao C.V. Transportation on board the ship is provided solely by the Shipowner and Operator and pursuant to the Cruise Contract that you will receive prior to embarkation. Ships’ Registry: The Netherlands.

Non–Holland America Line services (for example, shore excursions) are generally performed by independent contractors. These non–Holland America Line services are solely at your risk and subject to the terms or arrangements with the independent contractor. HAL assumes no responsibility with respect to these non–Holland America Line services (including cancellation, injury, or death) even though HAL may collect monies or make bookings.

ACCURACY OF CONTENTS / GENERAL

Contents of this brochure, including terms and conditions, are subject to change at any time at the sole discretion of HAL. Please refer to HollandAmerica.com for up-to-date information. **Any advertised offer may be changed or revoked at any time.**

Situations may arise which, in our opinion, make it necessary for us to cancel, advance, or postpone a scheduled departure, change itineraries, or make substitutions involving hotels, restaurants, ports of call, other travel components, vessels, or other modes of transportation. In that event, we do not assume responsibility or liability for any resulting losses, expenses, or inconvenience. We are not required to make refunds once travel commences, regardless of the reason for guests being unable to complete their travel.

The ship names and all other trademarks, slogans, logos, and imagery used herein are, whether or not registered, owned by Holland America Line N.V.

All guests will be required to agree to the Cruise Contract and all information and terms therein.


 CALL YOUR TRAVEL ADVISOR OR
1-877-SAIL HAL (1-877-724-5425)



 CALL YOUR TRAVEL ADVISOR
OR **1300 987 322**


  CALL YOUR TRAVEL ADVISOR
OR **0344 338 8605**

**OR VISIT
HOLLANDAMERICA.COM**

Holland America

 **HAVE IT ALL EARLY BOOKING BONUS TERMS & CONDITIONS** Have It All Early Booking Bonus Offer (“Early Booking Bonus Offer”) fare and its parts are neither transferable nor refundable and have no cash value. Early Booking Bonus Offer fares available only on select departures and exclude Grand Voyages and any cruise lasting 5 days or less. Any advertised fare may be changed or revoked at any time. Fares are subject to full terms and conditions, available at HollandAmerica.com/package-terms. **Elite Beverage Package** has a daily limit of 15 beverages. Available only for beverages priced at US\$15 or less. Must be 21+ for alcoholic beverages. Management reserves the right to revoke the package and may refuse service for any reason. The package excludes beverages purchased in The Shops, from the mini-bar, through 24-hour room service or on Half Moon Cay. **Specialty Dining** based on cruise duration and ship type. Dining options are determined by ship and exclude all events in Pinnacle Grill. **Shore Excursion** offer is based on cruise duration and is per person, not per stateroom. For 6- to 9-day cruises, eligible guests will receive US\$100 credit per person to apply toward their shore excursion purchase(s). For 10- to 20-day cruises, eligible guests will receive US\$200 credit per person to apply toward their shore excursion purchase(s). For 21+ day cruises (excluding Grand Voyages), eligible guests will receive US\$300 credit per person to apply toward their shore excursion purchase(s). Shore Excursion credit must be used on corresponding cruise and is non-refundable. **Wi-Fi Premium Package:** All onboard Internet usage is subject to Holland America Line’s (“HAL’s”) standard policies, which may limit or block browsing/use of some sites or applications due to network security and bandwidth usage. Offerings are subject to change without notice. Plan can be used on any device, but only one device can be actively connected at a time. Upgrades are available once on board. Offer applies to 1st/2nd guests in a stateroom only. **Low Price Guarantee:** If a guest books a HAL cruise with the Early Booking Bonus Offer (the “original booking”) and such guest finds a cheaper price for an identical booking within the duration of the Early Booking Bonus Offer (the “Comparison Fare”), the difference may be compensated in the form of an onboard credit, stateroom upgrade or other method. HAL reserves the sole right to determine the method of compensation made to guests. A fare will be considered a Comparison Fare only if its booking consists of details that are identical to those of the original booking (including, but not limited to, the same ship, sail dates, stateroom category and number of guests as the original booking). A determination as to whether the located fare is identical to the original booking will be at HAL’s sole discretion. HAL reserves the right to apply this price protection and offer at its discretion. Other restrictions and exclusions may apply. Holland America Line is neither responsible nor liable for any printing errors. Promotion is based on promotion code(s) N2 and based on double occupancy. Ships’ Registry: The Netherlands.

  **HAVE IT ALL EARLY BOOKING BONUS TERMS & CONDITIONS** Have It All Early Booking Bonus Offer (“Early Booking Bonus Offer”) is available for a limited time, on a first-come, first-served basis, to the first guests that make a new booking in connection with the Early Booking Bonus Offer while it is available. Taxes, Fees & Port Expenses are included. All values herein are in USD. Holland America Cruise Line (“HAL”) may change or revoke the Offer or its parts at any time. Early Booking Bonus Offer is valued at US\$130 per day. Other exclusions and terms may apply; void where prohibited. Early Booking Bonus Offer and its parts are neither transferable, substitutable, nor redeemable for cash. Early Booking Bonus Offer is available for 1st/2nd guests only. Early Booking Bonus Offer fares available only on select departures and exclude Grand Voyages and any cruise lasting 5 days or less. **Elite Beverage Package** has a daily limit of 15 beverages, including all beverages priced at US\$15 or less and includes beverage service charges. The Elite Beverage Package includes wine, beer, spirits, cocktails, non-alcoholic beverages, sodas, bottled water (sparkling or still, 400ml or less) and coffee. Guests must order one beverage at a time and be 21 years+ for alcoholic beverages. Sharing of any beverage or the package is not permitted. Beverage management/HAL reserve the right to revoke the package if misused and refuse service for any reason, including service of alcoholic beverages to intoxicated guests. Package excludes beverages purchased in The Shops, from the mini-bar, through 24-hour room service or on Half Moon Cay. **Specialty Dining** is based on cruise duration and ship type. For 6- to 9-day cruises, guests will receive one night at Pinnacle Grill, Canaletto or Tamarind. For ships without Tamarind, guests will receive one night at Pinnacle Grill or Canaletto. For 10- to 20-day cruises, guests will receive two nights: one night at Pinnacle Grill and one night at Canaletto or Tamarind. For ships without Tamarind, guests will receive two nights: one night at Pinnacle Grill and one night at Canaletto. For 21+ day cruises (excluding Grand Voyages), guests will receive three nights: one night at Pinnacle Grill, one night at Tamarind and one night at Canaletto. For ships without Tamarind, guests will receive three nights: two nights at Pinnacle Grill and one night at Canaletto. Offer excludes Speciality Dining Events in Pinnacle Grill such as Sel de Mer, A Taste of De Librije and Cellar Master Dinner. Reservations and dining times will be available to pre-reserve. **Shore Excursion credit** is based on cruise duration and is per person, not per stateroom. For 6- to 9-day cruises, eligible guests will receive US\$100 credit per person to apply toward their shore excursion purchase(s). For 10- to 20-day cruises, eligible guests will receive US\$200 credit per person to apply toward their shore excursion purchase(s). For 21+ day cruises (excluding Grand Voyages), eligible guests will receive US\$300 credit per person to apply toward their shore excursion purchase(s). Shore Excursion credit must be used on corresponding cruise and is non-refundable. Shore Excursion credit cannot be redeemed for cash value or applied to a non–shore excursion item. **Wi-Fi Premium Package:** All onboard Internet usage is subject to HAL standard policies, which may limit browsing of some sites due to network security and bandwidth usage. Applications that use high bandwidth may be blocked and offerings are subject to change with or without notice. The plan can be activated on any device, but only one device can be actively connected at a time. Upgrades are available once on board for a single day, the remaining duration of the voyage or adding more devices. Offer applies to 1st/2nd guests in a stateroom only. **Crew Appreciation:** Receive prepaid stateroom gratuities on board. Gratuities for other services, including, but not limited to, bar, dining room, wine accounts and spa/salon services, are not included. HAL is not responsible or liable for any printing errors. Promotion is based on promotion code(s) N2 and based on double occupancy. Ships’ Registry: The Netherlands.

 **HAVE IT ALL EARLY BOOKING BONUS TERMS & CONDITIONS** Have It All Early Booking Bonus Offer (“Early Booking Bonus Offer”) is available for a limited time, on a first-come, first-served basis, to the first guests that make a new booking in connection with the Early Booking Bonus Offer while it is available. Taxes, Fees & Port Expenses are included. All values herein are in USD. Holland America Cruise Line (“HAL”) may change or revoke the Offer or its parts at any time. Early Booking Bonus Offer is valued at US\$130 per day. Other exclusions and terms may apply; void where prohibited. Early Booking Bonus Offer and its parts are neither transferable, substitutable, nor redeemable for cash. Early Booking Bonus Offer is available for 1st/2nd guests only. Early Booking Bonus Offer fares available only on select 2024 and 2025 departures. **Elite Beverage Package** has a daily limit of 15 beverages, including all beverages priced at US\$15 or less, and includes beverage service charges. The Elite Beverage Package includes wine, beer, spirits, cocktails, non-alcoholic beverages, sodas, bottled water (sparkling or still, 400ml or less) and coffee. Guests must order one beverage at a time and be 21 years+ for alcoholic beverages. Sharing of any beverage or the package is not permitted. Beverage management/HAL reserve the right to revoke the package if misused and refuse service for any reason, including service of alcoholic beverages to intoxicated guests. Package excludes beverages purchased in The Shops, from the mini-bar, through 24-hour room service or on Half Moon Cay. **Specialty Dining** is based on cruise duration and ship type. For 6- to 9-day cruises, guests will receive one night at Pinnacle Grill, Canaletto or Tamarind. For ships without Tamarind, guests will receive one night at Pinnacle Grill or Canaletto. For 10- to 20-day cruises, guests will receive two nights: one night at Pinnacle Grill and one night at Canaletto or Tamarind. For ships without Tamarind, guests will receive two nights: one night at Pinnacle Grill and one night at Canaletto. For 21+ day cruises (excluding Grand Voyages), guests will receive three nights: one night at Pinnacle Grill, one night at Tamarind and one night at Canaletto. For ships without Tamarind, guests will receive three nights: two nights at Pinnacle Grill and one night at Canaletto. Offer excludes Speciality Dining Events in Pinnacle Grill such as Sel de Mer, A Taste of De Librije and Cellar Master Dinner. Reservations and dining times will be available to pre-reserve. **Shore Excursion credit** is based on cruise duration and is per person, not per stateroom. For 6- to 9-day cruises, eligible guests will receive US\$100 credit per person to apply toward their shore excursion purchase(s). For 10- to 20-day cruises, eligible guests will receive US\$200 credit per person to apply toward their shore excursion purchase(s). For 21+ day cruises (excluding Grand Voyages), eligible guests will receive US\$300 credit per person to apply toward their shore excursion purchase(s). Shore Excursion credit must be used on corresponding cruise and is non-refundable. Shore Excursion credit cannot be redeemed for cash value or applied to a non–shore excursion item. **Wi-Fi Premium Package:** All onboard Internet usage is subject to HAL standard policies, which may limit browsing of some sites due to network security and bandwidth usage. Applications that use high bandwidth may be blocked and offerings are subject to change with or without notice. The plan can be activated on any device, but only one device can be actively connected at a time. Upgrades are available once on board for a single day, the remaining duration of the voyage or adding more devices. Offer applies to 1st/2nd guests in a stateroom only. **Crew Appreciation:** Receive prepaid stateroom gratuities on board. Gratuities for other services, including, but not limited to, bar, dining room, wine accounts and spa/salon services, are not included. HAL is not responsible or liable for any printing errors. Promotion is based on promotion code(s) N2 and based on double occupancy. To be read in conjunction with the Holland America Line Cruise Contract at HollandAmerica.com/en_US/legal-privacy-australia/cruise-contract.html, by which guests will be bound. Whilst all information is correct at time of publication, offers are subject to change or withdrawal. Carnival plc trading as Carnival Australia ABN 23 107 998 443 as agent for Holland America Line. Ships’ Registry: The Netherlands.



HOLLAND AMERICA LINE
NAVIGATOR

**DOWNLOAD THE
NAVIGATOR® APP**

The **Holland America Line Navigator® App** is your indispensable tool for cruise planning, essential updates, embarkation, managing your onboard experience and booking shore excursions.

Pricing Made Easy | All taxes and fees now included in cruise fares.