



2025

GRAND VOYAGES

ROUNDTRIP FROM FT. LAUDERDALE


A photograph of the ancient city of Petra in Jordan, showing the Treasury temple carved into the sandstone cliffs. The scene is set against a clear blue sky with a few wispy clouds. The foreground shows the rugged, rocky terrain of the city.

TABLE OF CONTENTS	WHAT MAKES A GRAND VOYAGE GRAND?	2
	SEE THE WORLD FROM FT. LAUDERDALE	3
	WHY EMBARK ON A GRAND VOYAGE WITH HOLLAND AMERICA LINE	4
	NEW 133-DAY GRAND VOYAGE: POLE-TO-POLE	5
	MEET <i>VOLENDAM</i>	9
	124-DAY GRAND WORLD VOYAGE	11
	MEET <i>ZUIDERDAM</i>	15
	LIFE AT SEA	
	ANOTHER LEVEL OF CRUISING	17
	UNPARALLELED ENTERTAINMENT	18
	EXPERT-LED ACTIVITIES	19
	A WORLD OF FLAVOR	20
	RELAX & RECHARGE	21
	TERMS & CONDITIONS	22

WHAT MAKES A GRAND VOYAGE GRAND?

More ports. Longer stays. Luxurious overnights ashore. Experience more of everything on a Holland America Line Grand Voyage. Call on favored and far-flung destinations, visiting UNESCO World Heritage sites and delving deeply into the culture and heritage of each extraordinary locale. On board your ship, enjoy special events, expert-led activities and authentic regional cuisine. Immerse yourself in the timeless elegance of ocean travel as you embark on the journey of a lifetime.



SEE THE
WORLD
 FROM FT. LAUDERDALE



Circumnavigate South America, cruise the glacier-studded fjords of Norway and Iceland, or island-hop across the South Pacific – right from your doorstep. A simple drive or domestic flight unlocks a world of destinations, cultures, and experiences without the challenges of international air travel. Collect a plethora of ports and cross item after item off your bucket list on a single Grand Voyage of discovery.

133-DAY GRAND VOYAGE: POLE-TO-POLE
 Visit **68 DIFFERENT PORTS**
 in **28 COUNTRIES**
 all from **FT. LAUDERDALE**

124-DAY GRAND WORLD VOYAGE
 Visit **46 DIFFERENT PORTS**
 in **32 COUNTRIES**
 all from **FT. LAUDERDALE**

WHY EMBARK ON A GRAND VOYAGE WITH HOLLAND AMERICA LINE



AWARD-WINNING ITINERARIES

Explore rare and renowned treasures and dive deeper during overnights in Singapore, Sydney, Rio de Janeiro, and more.



PERSONALIZED SERVICE

Our dedicated crew members delight in providing gracious and warmly attentive service, establishing a genuine connection with our guests.



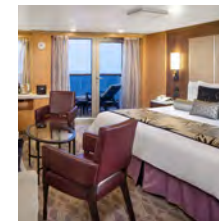
CURATED ONBOARD PROGRAMMING

A world of discovery awaits on board our ships. Enjoy special performances, surprise gifts, theme parties and unforgettable experiences.



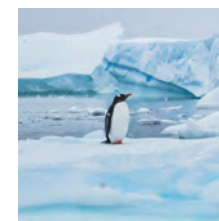
FRESH, REGIONALLY INSPIRED CUISINE

From casual meals and classic staples to exquisite fine dining and authentic regional cuisine, you're sure to find the perfect palate-pleaser.



A SECOND HOME AT SEA

Curl up in the Crow's Nest, get gorgeous at the Greenhouse Spa & Salon,[®] or peruse the menu at Pinnacle Grill while enveloped in award-winning accommodations.



ICONIC LANDMARKS & NATURAL WONDERS

Transit the Panama and Suez Canals, gaze at Antarctica's towering ice shelves, marvel at Australia's Great Barrier Reef, and much more.

NEW



Torres del Paine National Park, Chile

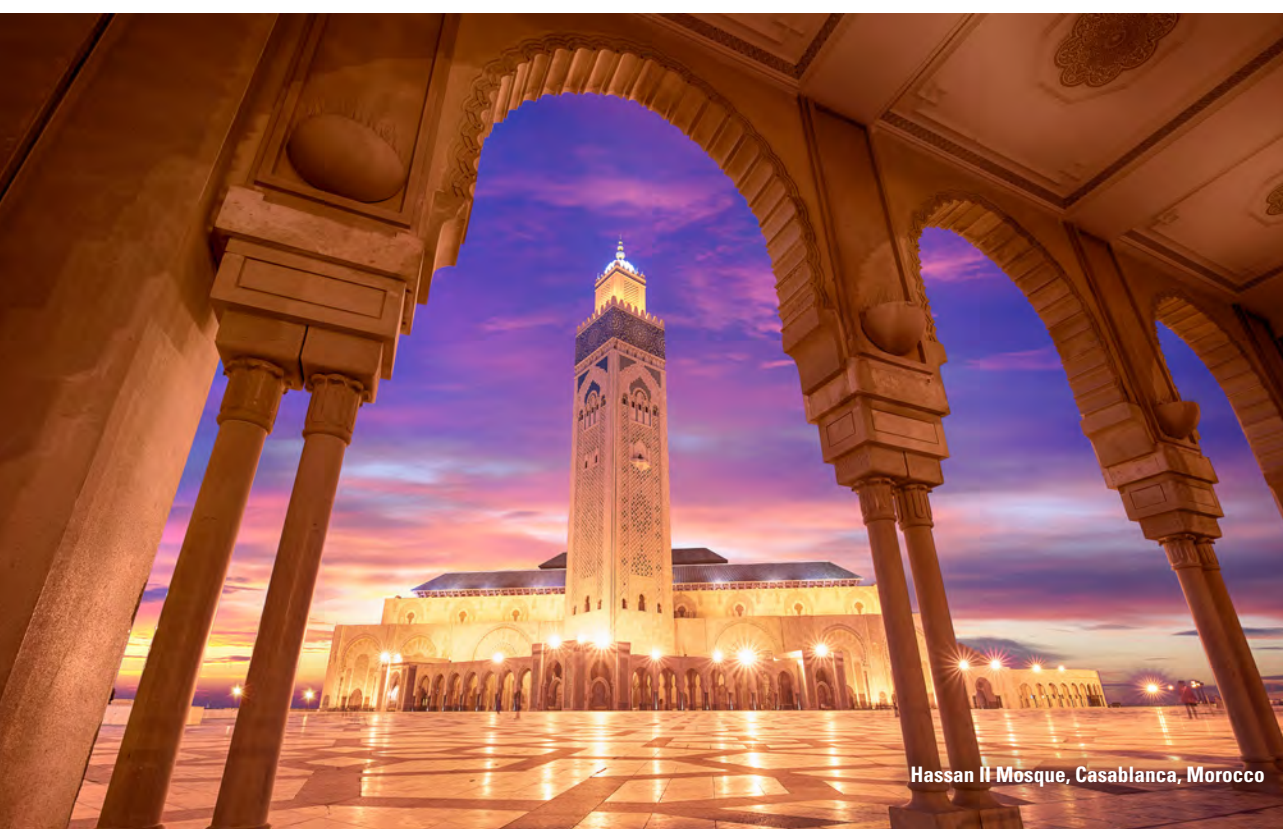


Antarctic Peninsula

133-DAY GRAND VOYAGE: POLE-TO-POLE

- Journey from the frozen tundra of **Antarctica** to the windswept coastline of Norway's **North Cape**
- Experience the astounding **Panama Canal** & trace the footsteps of ancient Incans in **South America**
- Witness the White Continent's icy grandeur during a 4-Day **Antarctic Experience**
- Cruise the amazing **Amazon River** & cross the storied **Atlantic Ocean**
- Bask in northern **Africa's** majesty & **Western Europe's** old-world wonders
- Sail **Norway** & **Iceland's** magnificent fjords & admire **Greenland's** stark beauty
- Delight in **Canada & New England's** coastal charm as you return to Ft. Lauderdale with a lifetime's worth of memories
- Book by **June 3, 2024**, to receive **free unlimited Wi-Fi, us\$500 Air Credit,*** up to **us\$2,000 Onboard Credit*** & more

*US\$500 Air Credit is per person for flights booked through Flight Ease.® Onboard Credit amount varies based on stateroom type.



Hassan II Mosque, Casablanca, Morocco



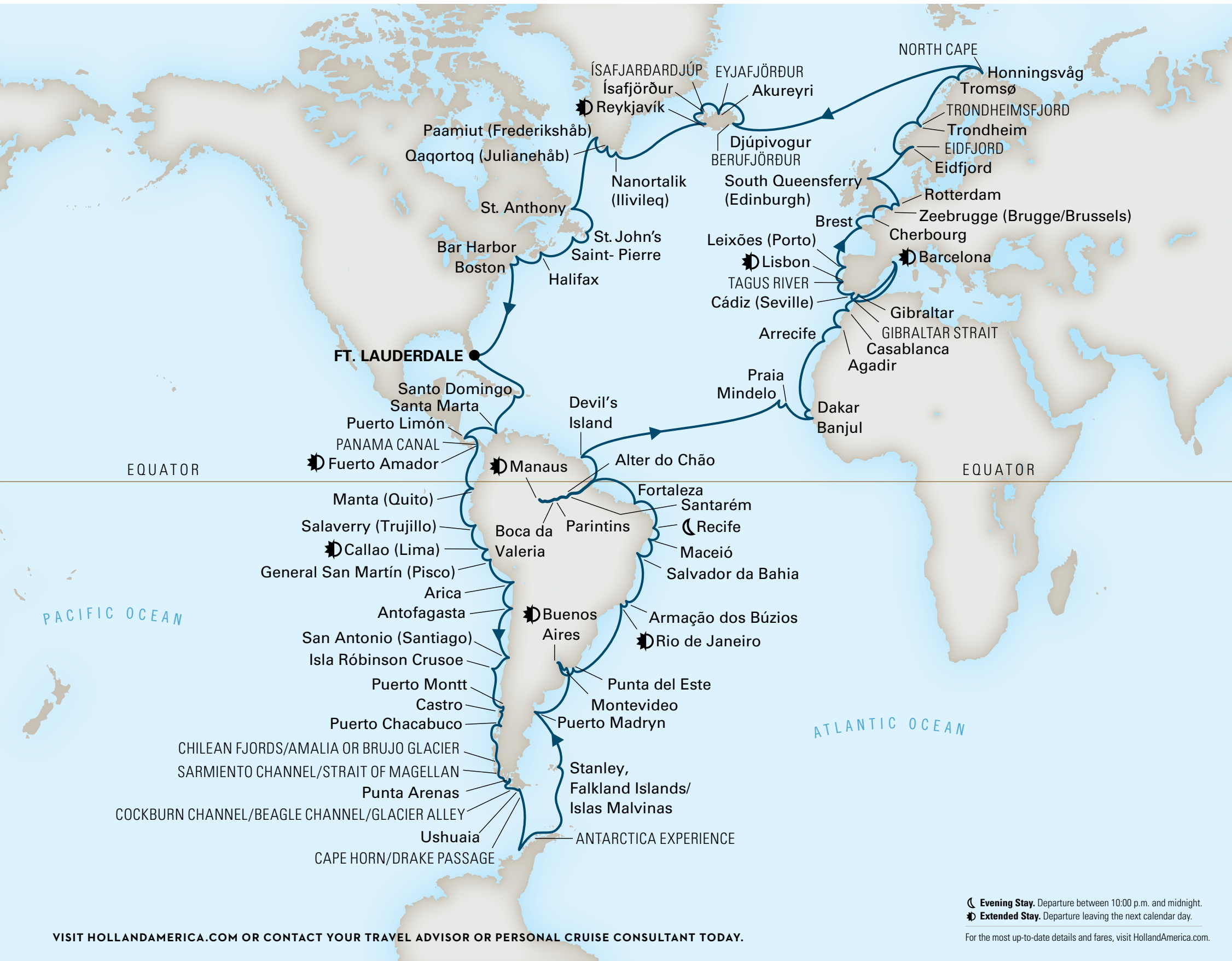
Flamenco dancer, Cádiz (Seville), Spain



North Cape, Norway

133-DAY GRAND VOYAGE: POLE-TO-POLE

VOLENDAM | 68 PORTS | 28 COUNTRIES | 5 CONTINENTS | 8 OVERNIGHTS



133-DAY GRAND VOYAGE: POLE-TO-POLE

VOLENDAM | 68 PORTS | 28 COUNTRIES | 5 CONTINENTS | 8 OVERNIGHTS



Machu Picchu, Peru



Carnival dancers, Rio de Janeiro, Brazil



Museu Nacional de Arqueologia, Lisbon, Portugal



Seljalandsfoss waterfall, Iceland

DATE	PORT
January 25	FT. LAUDERDALE, FLORIDA
January 26–27	Days at Sea
January 28	Santo Domingo, Dominican Republic
January 29	Day at Sea
January 30	Santa Marta, Colombia
January 31	Day at Sea
February 1	Puerto Limón (San José), Costa Rica
February 2	Enter Panama Canal (Cristóbal)
	Transit Panama Canal
	Exit Panama Canal (Balboa)
February 3	Fuerte Amador (Panama City), Panama (overnight)
	Fuerte Amador (Panama City), Panama
February 4	Cross the Equator
February 5	Manta (Quito), Ecuador
February 6	Day at Sea
February 7	Salaverry (Trujillo), Peru
February 8	Day at Sea
February 9	Callao (Lima), Peru (overnight)
February 10	Callao (Lima), Peru
February 11	General San Martín (Pisco), Peru
February 12	Day at Sea
February 13	Arica, Chile
February 14	Day at Sea
February 15	Antofagasta, Chile
February 16	Day at Sea
February 17	San Antonio (Santiago), Chile
February 18	Day at Sea
February 19	Robinson Crusoe Island, Chile
February 20	Day at Sea
February 21	Puerto Montt, Chile
February 22	Castro, Chiloé Island, Chile
February 23	Puerto Chacabuco, Chile
February 24	Chilean fjords (scenic cruising)

DATE	PORT
February 25	Amalia or Brujo Glacier (scenic cruising)
	Sarmiento Channel (scenic cruising)
February 26	Strait of Magellan (scenic cruising) / Punta Arenas, Chile
	Cockburn Channel (scenic cruising)
	Beagle Channel (scenic cruising)
February 27	Glacier Alley (scenic cruising) / Ushuaia, Argentina
February 28	Cape Horn & Drake Passage (scenic cruising)
March 1	Day at Sea
March 2–5	The Holland America Line Antarctic Experience
March 6	Day at Sea
March 7	Port Stanley, Falkland Islands
March 8	Day at Sea
March 9	Puerto Madryn, Argentina
March 10–11	Days at Sea
March 12	Montevideo, Uruguay
March 13	Buenos Aires, Argentina (overnight)
March 14	Buenos Aires, Argentina
March 15	Punta del Este, Uruguay
March 16–17	Days at Sea
March 18	Rio de Janeiro, Brazil (overnight)
March 19	Rio de Janeiro, Brazil
March 20	Armação dos Búzios, Brazil
March 21	Day at Sea
March 22	Salvador da Bahia, Brazil
March 23	Maceió, Brazil
March 24	Recife, Brazil
March 25	Day at Sea
March 26	Fortaleza, Brazil
March 27	Day at Sea
March 28	Cross the Equator
March 29	Cross the Amazon River Bar
	Amazon River (scenic cruising) / Cross the Equator
March 30	Santarém, Brazil

DATE	PORT
March 31	Boca Da Valeria, Brazil
April 1	Manaus, Brazil (overnight)
April 2	Manaus, Brazil
April 3	Parintins, Brazil
April 4	Alter do Chão, Brazil
April 5	Amazon River (scenic cruising)
	Cross the Equator / Cross the Amazon River Bar
April 6	Day at Sea
April 7	Devil's Island, French Guiana
April 8–11	Days at Sea
April 12	Mindelo, Ilha de São Vicente, Cape Verde
April 13	Praia, Ilha de Santiago, Cape Verde
April 14	Day at Sea
April 15	Banjul, Gambia
April 16	Dakar, Senegal
April 17–18	Days at Sea
April 19	Arrecife, Lanzarote, Canary Islands, Spain
April 20	Agadir, Morocco
April 21	Casablanca, Marrakech, Morocco
April 22	Strait of Gibraltar (scenic cruising) / Gibraltar, Gibraltar
April 23	Day at Sea
April 24	Barcelona, Spain (overnight)
April 25	Barcelona, Spain
April 26	Day at Sea
April 27	Cádiz (Seville), Spain
April 28	Tagus River (scenic cruising) / Lisbon, Portugal (overnight)
April 29	Lisbon, Portugal
April 30	Leixões (Porto), Portugal
May 1	Day at Sea
May 2	Brest, Brittany, France
May 3	Cherbourg (Normandy), France
May 4	Zeebrugge (Bruges), Belgium

DATE	PORT
May 5	Rotterdam, Netherlands
May 6	Day at Sea
May 7	South Queensferry (Edinburgh), Scotland
May 8	Day at Sea
May 9	Eidfjord (scenic cruising) / Eidfjord, Norway
May 10	Day at Sea
May 11	Trondheim, Norway / Trondheimsfjord (scenic cruising)
May 12	Day at Sea
May 13	Tromsø, Norway
May 14	North Cape (scenic cruising)
	Honningsvåg (North Cape), Norway
May 15–16	Days at Sea
May 17	Djúpivogur, Iceland / Berufjörður (scenic cruising)
May 18	Akureyri, Iceland / Eyjafjörður (scenic cruising)
May 19	Ísafjörður, Iceland / Ísafjarðardjúp (scenic cruising)
May 20	Reykjavík, Iceland (overnight)
May 21	Reykjavík, Iceland
May 22–23	Days at Sea
May 24	Nanortalik, Greenland
May 25	Qaqortoq (Julianehåb), Greenland
May 26	Paamiut (Frederikshåb), Greenland
May 27	Day at Sea
May 28	St. Anthony, Newfoundland, Canada
May 29	St. John's, Newfoundland, Canada
May 30	St. Pierre, St. Pierre and Miquelon, Canada
May 31	Day at Sea
June 1	Halifax, Nova Scotia, Canada
June 2	Bar Harbor, Maine
June 3	Boston, Massachusetts
June 4–6	Days at Sea
June 7	FT. LAUDERDALE, FLORIDA

EARLY BOOKING BENEFITS

Available exclusively for full-cruise guests at a value of up to us\$8,800 per person

	Pinnacle (PS)	Neptune (SA-SB)	Vista (A-BC)	Lanai (CA)	Ocean View (C-F)	Ocean View (FF-HH)*	Inside (I-N)
NEW! Free Surf Wi-Fi Package	X	X	X	X	X	X	X
NEW! Air Credit [†]	us\$500	us\$500	us\$500	us\$500	us\$500	us\$500	us\$500
NEW! Roundtrip Airport Transfers**	X	X	X	X	X	X	X
Onboard Credit	us\$2,000 per guest / us\$4,000 per single	us\$1,000 per guest / us\$2,000 per single	us\$750 per guest / us\$1,425 per single	us\$500 per guest / us\$800 per single	us\$500 per guest / us\$800 per single	—	—
“Welcome Aboard” Bottle of Sparkling Wine (1 bottle per stateroom)	X	X	X	X	X	—	—
Prepaid Crew Appreciation	X	X	X	X	X	—	—
Luggage Delivery Service (to/from FLL) ^{††}	5 pieces	5 pieces	4 pieces	3 pieces	3 pieces	—	—
Complimentary Shore Excursion	X	X	X	—	—	—	—
In-suite Liquor Setup (4 bottles per stateroom)	X	X	X	—	—	—	—
3% Pay in Full Discount	X	X	X	X	X	X	X
Complimentary Unlimited In-suite Bottled Water & Soft Drinks	X	X	—	—	—	—	—
Complimentary Laundry, Dry Cleaning & Pressing	X	X	X	—	—	—	—
us\$500 Grand Mariner Discount ^{***}	X	X	X	X	X	X	X



Corcovado mountain, Rio de Janeiro, Brazil

VISIT HOLLANDAMERICA.COM OR CONTACT YOUR TRAVEL ADVISOR OR PERSONAL CRUISE CONSULTANT TODAY.

*Some categories have obstructed or partially obstructed views. [†]International Air Credit amounts: GBP 400; EUR 450; AUD 650. ^{**}Ft. Lauderdale airport transfers available only on days of embarkation (January 25, 2025) and disembarkation (June 7, 2025). ^{††}Luggage delivery applies to U.S. and Canadian residents only. Residents of other countries will receive Onboard Credit in the following amounts (applied at time of booking): US\$500 Onboard Credit/person (Categories PS-SB); US\$400 Onboard Credit/person (Categories A-BC); US\$300 Onboard Credit/person (Categories CA-F). ^{***}US\$500 Grand Mariner Discount available only to past Holland America Line Grand Voyage guests. See page 22 for full terms & conditions.

MEET VOLENDAM



2 PICKLEBALL COURTS

The first and only cruise line partner of the Professional Pickleball Association! Purchase branded starter kits, watch tutorial videos and enjoy complimentary lessons.



5 POOLS & HOT TUBS

Swim in any weather with the Lido Pool's retractable overhead roof! Cool off in the outdoor Sea View Pool, unwind in the Hydropool or escape the chill in one of *Volendam's* two hot tubs.



4 ENTERTAINMENT VENUES

Take in an innovative performance on the World Stage, savor cocktails at the Piano Bar, watch a movie at the Wajang Theater or dance the night away with the Ocean Bar band.



7 WORLD-CLASS DINING OPTIONS

From grab-and-go choices and poolside fries to elegant restaurants and 24-hour room service, *Volendam's* host of eateries is sure to satisfy your every craving.



Volendam takes its décor cues from the garden, boasting regal spaces adorned with floral fabrics, botanical tapestries and eye-catching flower arrangements. This refined and spacious R-Class ship is perfectly sized for creating an intimate atmosphere while bringing you closer to the wondrous land-, sea-, and cityscapes that await you.

1,432
GUESTS

781 ft.
LENGTH

105.8 ft.
WIDTH



Neptune Suite

VOLENDAM: YOUR HOME AWAY FROM HOME

Unpack once with ease amid our generous storage space and ensure peace of mind with our secure in-room safe. Pack as much or as little as you wish with our flexible laundry packages and leave the daily housekeeping to us while you unwind with massage shower heads, pamper yourself with Elemis Aromapure toiletries, and drift comfortably off to sleep in your Mariner's Dream™ bed.

COMFORTABLE STATEROOMS

In addition to Inside and Ocean View staterooms, *Volendam* alone offers unique Lanai staterooms featuring mirrored, floor-to-ceiling sliding glass doors opening directly onto the Promenade Deck.

ELEGANT SUITES

Volendam's Vista Suites feature comfortable sitting areas, whirlpool baths and other tasteful appointments. Neptune and Pinnacle Suites offer a host of perks ranging from fresh flowers to personal concierge service.



Ocean View stateroom



Lanai stateroom

[CLICK HERE TO
LEARN MORE >](#)



Lempuyang Temple, Bali, Indonesia

124-DAY GRAND WORLD VOYAGE

- Unveil a hidden tapestry of intriguing **islands**, spectacular **cities** & jaw-dropping **landscapes**
- Transit the amazing **Panama Canal** & cruise the west coast of **South America**
- Embark on an **optional overland tour** of **Machu Picchu** or the **Galápagos Islands** during a **two-night stay in Callao (Lima)**
- Visit mysterious **Easter Island** & sail the stunning **South Pacific**
- Cruise the east coast of **Australia** & enjoy an unforgettable **2-Day Great Barrier Reef Experience**
- Cruise top ports in **Southeast Asia** & eastern **Africa** + cross the historic **Suez Canal**
- Sail through **Mediterranean** marvels & bask in the glow of new discoveries during a final **transatlantic crossing**
- Book by **June 3, 2024**, to receive **free unlimited Wi-Fi, us\$500 Air Credit,*** up to **us\$2,000 Onboard Credit*** & more

*US\$500 Air Credit is per person for flights booked through Flight Ease.® Onboard Credit amount varies based on stateroom type.



Marine iguana, Galápagos Islands, Ecuador



Moai statues, Easter Island, Chile



La Sagrada Família basilica

HollandAmerica.com

124-DAY GRAND WORLD VOYAGE

ZUIDERDAM | 46 PORTS | 32 COUNTRIES | 6 CONTINENTS | 10 OVERNIGHTS



124-DAY GRAND WORLD VOYAGE

ZUIDERDAM | 46 PORTS | 32 COUNTRIES | 6 CONTINENTS | 10 OVERNIGHTS



La Compañía Jesuit Cathedral, Quito, Ecuador



Great Barrier Reef, Australia



Maasai warrior, Mombasa, Kenya



The Parthenon, Athens, Greece

DATE	PORT
January 4	FT. LAUDERDALE, FLORIDA
January 5	Day at Sea
January 6	George Town, Grand Cayman, Cayman Islands
January 7	Day at Sea
January 8	Puerto Limón (San José), Costa Rica
January 9	Enter Panama Canal (Cristóbal) Transit Panama Canal Exit Panama Canal (Balboa)
January 10	Cross the Equator
January 11	Manta (Quito), Ecuador
January 12–13	Days at Sea
January 14	Callao (Lima), Peru (overnight)
January 15	Callao (Lima), Peru (overnight)
January 16	Callao (Lima), Peru
January 17–20	Days at Sea
January 21	Easter Island, Chile (overnight)
January 22	Easter Island, Chile
January 23–24	Days at Sea
January 25	Adamstown, Pitcairn Island, Pitcairn (scenic cruising)
January 26–27	Days at Sea
January 28	Papeete, Tahiti, Society Islands, French Polynesia (overnight)
January 29	Papeete, Tahiti, Society Islands, French Polynesia Bahia d Oponoha, Moorea, Society Islands, French Polynesia
January 30	Uturoa, Raiatea, Society Islands, French Polynesia
January 31	Day at Sea
February 1	Avatiu, Rarotonga, Cook Islands

DATE	PORT
February 2	Day at Sea
February 3–4	Cross the International Date Line
February 5	Nuku'alofa, Tongatapu, Tonga
February 6–7	Days at Sea
February 8	Nouméa, Grande Terre, New Caledonia
February 9–10	Days at Sea
February 11	Sydney, New South Wales, Australia (overnight)
February 12	Sydney, New South Wales, Australia
February 13	Day at Sea
February 14	Brisbane, Queensland, Australia
February 15	Day at Sea
February 16	Airlie Beach, Queensland, Australia
February 17	Day at Sea
February 18	Cairns, Queensland, Australia
February 19	The Great Barrier Reef Experience: Ribbon Reef Region
February 20	The Great Barrier Reef Experience: Far North Region Torres Strait (scenic cruising)
February 21	Day at Sea
February 22	Darwin, Northern Territory, Australia
February 23–24	Days at Sea
February 25	Slawi Bay, Komodo, Indonesia
February 26	Benoa (Denpasar), Bali, Indonesia
February 27–28	Days at Sea
March 1	Singapore, Republic of Singapore (overnight)
March 2	Singapore, Republic of Singapore
March 3	Port Klang (Kuala Lumpur), Malaysia

DATE	PORT
March 4	Porto Malai, Langkawi, Malaysia
March 5–7	Days at Sea
March 8	Colombo, Sri Lanka
March 9	Day at Sea
March 10	Malé, Maldives
March 11	Day at Sea
March 12	Cross the Equator
March 13	Victoria, Mahé, Seychelles
March 14–15	Days at Sea
March 16	Port Louis, Mauritius
March 17	La Possession, Reunión
March 18	Day at Sea
March 19	Tolanaro (Fort Douphin), Madagascar
March 20–21	Days at Sea
March 22	Durban, South Africa
March 23–24	Days at Sea
March 25	Cape Town, South Africa (overnight)
March 26	Cape Town, South Africa
March 27–28	Days at Sea
March 29	Richards Bay, South Africa
March 30–31	Days at Sea
April 1	Mayotte, French Comoros
April 2	Day at Sea
April 3	Zanzibar, Tanzania
April 4	Mombasa, Kenya (overnight)
April 5	Mombasa, Kenya

DATE	PORT
April 6–11	Days at Sea
April 12	Safaga (Luxor), Egypt (overnight)
April 13	Safaga (Luxor), Egypt
April 14	Aqaba (Petra), Jordan
April 15	Day at Sea
April 16	Enter Suez Canal (Suez) Transit Suez Canal Exit Suez Canal (Port Said)
April 17	Alexandria (Cairo), Egypt
April 18	Day at Sea
April 19	Piraeus (Athens), Greece
April 20	Day at Sea
April 21	Naples (Pompeii), Italy
April 22	Civitavecchia (Rome), Italy
April 23	Ajaccio, Corsica, France
April 24	Barcelona, Spain (overnight)
April 25	Barcelona, Spain
April 26	Cartagena (Murcia), Spain
April 27	Gibraltar, Gibraltar
April 28	Cádiz (Seville), Spain
April 29	Tagus River (scenic cruising) Lisbon, Portugal
April 30	Day at Sea
May 1	Funchal, Madeira, Portugal
May 2–8	Days at Sea
May 9	FT. LAUDERDALE, FLORIDA

The following segment voyages for the 124-Day *Grand World Voyage* will also be available:

- 37-Day *Grand World Voyage* segment; January 4–February 10, 2025; Ft. Lauderdale to Sydney
- 49-Day *Grand World Voyage* segment; March 1–April 19, 2025; Singapore to Athens
- 55-Day *Grand World Voyage* segment; January 4–February 28, 2025; Ft. Lauderdale to Singapore
- 45-Day *Grand World Voyage* segment; March 25–May 9, 2025; Cape Town to Ft. Lauderdale
- 42-Day *Grand World Voyage* segment; February 11–March 25, 2025; Sydney to Cape Town
- 20-Day *Grand World Voyage* segment; April 19–May 9, 2025; Athens to Ft. Lauderdale

EARLY BOOKING BENEFITS



North Malé Atoll, Maldives

VISIT [HOLLANDAMERICA.COM](https://www.hollandamerica.com) OR CONTACT YOUR TRAVEL ADVISOR OR PERSONAL CRUISE CONSULTANT TODAY.

Available exclusively for full-cruise guests at a value of up to us\$8,500 per person

	Pinnacle (PS)	Neptune (SA–SC)	Signature (SS–SZ)	Verandah (VA–VH)	Ocean View (C–E)	Ocean View (F–HH)*	Inside (I–N)
NEW! Free Surf Wi-Fi Package	X	X	X	X	X	X	X
NEW! Air Credit†	us\$500	us\$500	us\$500	us\$500	us\$500	us\$500	us\$500
NEW! Roundtrip Airport Transfers**	X	X	X	X	X	X	X
Onboard Credit	us\$2,000 per guest / us\$4,000 per single	us\$1,000 per guest / us\$2,000 per single	us\$750 per guest / us\$1,425 per single	us\$650 per guest / us\$1,140 per single	us\$500 per guest / us\$800 per single	–	–
“Welcome Aboard” Bottle of Sparkling Wine (1 bottle per stateroom)	X	X	X	X	X	–	–
Prepaid Crew Appreciation	X	X	X	X	X	–	–
Luggage Delivery Service (to/from FLL)**	5 pieces	5 pieces	4 pieces	3 pieces	3 pieces	–	–
Complimentary Shore Excursion	X	X	X	X	–	–	–
In-suite Liquor Setup (4 bottles per stateroom)	X	X	X	X	–	–	–
3% Pay in Full Discount	X	X	X	X	X	X	X
Complimentary Unlimited In-suite Bottled Water & Soft Drinks	X	X	–	–	–	–	–
Complimentary Laundry, Dry Cleaning & Pressing	X	X	X	–	–	–	–
US\$500 Grand Mariner Discount***	X	X	X	X	X	X	X

Available exclusively for guests sailing a shorter segment of the 124-Day Grand World Voyage

	Pinnacle (PS)	Neptune (SA–SC)	Signature (SS–SZ)	Verandah (VA–VH)	Ocean View (C–E)	Ocean View (F–HH)*	Inside (I–N)
NEW! Free Surf Wi-Fi Package	X	X	X	X	X	X	X
Onboard Credit (voyages up to 20 days)	us\$250 per guest / us\$500 per single	us\$250 per guest / us\$500 per single	us\$250 per guest / us\$475 per single	us\$200 per guest / us\$350 per single	us\$150 per guest / us\$240 per single	–	–
Onboard Credit (voyages 21+ days)	us\$500 per guest / us\$1,000 per single	us\$500 per guest / us\$1,000 per single	us\$500 per guest / us\$950 per single	us\$400 per guest / us\$700 per single	us\$300 per guest / us\$480 per single	–	–
3% Pay in Full Discount	X	X	X	X	X	X	X
Complimentary Laundry, Dry Cleaning & Pressing	X	X	–	–	–	–	–
Grand Mariner Discount***	X	X	X	X	X	X	X

*Some categories have obstructed or partially obstructed views. †International Air Credit amounts: GBP 400; EUR 450; AUD 650. **Ft. Lauderdale airport transfers available only on days of embarkation (January 4, 2025) and disembarkation (May 9, 2025). ††Luggage delivery applies to U.S. and Canadian residents only. Residents of other countries will receive Onboard Credit in the following amounts (applied at time of booking): US\$500 Onboard Credit/person (Categories PS–SC); US\$400 Onboard Credit/person (Categories SS–SZ); US\$300 Onboard Credit/person (Categories VA–E). ***Grand Mariner Discount available only to past Holland America Line Grand Voyage guests. Discount amount for segment voyages is dependent on voyage length (up to US\$200 value). See page 22 for full terms & conditions.

MEET ZUIDERDAM



Classic nautical lines, beautiful finishes, modern amenities and more than 2,000 pieces of museum-quality artwork make *Zuiderdam* a hands-down favorite. This Vista Class beauty is the perfect size for weaving through straits and channels with ease while leaving plenty of room for the entertainment and enrichment offerings that make your heart sing.

8 WORLD-CLASS DINING OPTIONS

From grab-and-go choices and poolside fries to elegant restaurants and 24-hour room service, *Zuiderdam's* host of eateries is sure to satisfy your every craving.



2 PICKLEBALL COURTS

The first and only cruise line partner of the Professional Pickleball Association! Purchase branded starter kits, watch tutorial videos and enjoy complimentary lessons.



4 ENTERTAINMENT VENUES

Watch an innovative performance on the World Stage, hear chart-topping hits at Billboard Onboard, rock out at Rolling Stone Lounge or dance the night away with Third Avenue West.



8 POOLS & HOT TUBS Swim in any weather with the Lido Pool's retractable overhead roof! Cool off in the outdoor Sea View Pool, unwind in the Hydropool or escape the chill in one of *Zuiderdam's* five hot tubs.



1,964

GUESTS

936 ft.

LENGTH

105.8 ft.

WIDTH



Neptune Suite

ZUIDERDAM: YOUR HOME AWAY FROM HOME

Unpack once with ease amid our generous storage space and ensure peace of mind with our secure in-room safe. Pack as much or as little as you wish with our flexible laundry packages and leave the daily housekeeping to us while you unwind with massage shower heads, pamper yourself with Elemis Aromapure toiletries, and drift comfortably off to sleep in your Mariner's Dream™ bed.

COMFORTABLE STATEROOMS

In addition to Inside and Ocean View staterooms, *Zuiderdam* offers Verandah staterooms featuring a comfortable sitting area and (of course) a private verandah.

ELEGANT SUITES

Zuiderdam's Signature Suites feature spacious sitting areas, sofa beds and other tasteful appointments. Neptune and Pinnacle Suites offer a host of perks ranging from fresh flowers to personal concierge service.



Ocean View stateroom



Verandah stateroom

[CLICK HERE TO
LEARN MORE >](#)

ANOTHER LEVEL OF CRUISING

Pack your party clothes and get ready to try something new! Your Grand Voyage will be filled with events and activities to suit every taste. Below are just a few of the festivities you can expect to encounter on board.



Special events



Team trivia



Memorable celebrations



Delightful surprises

THEME PARTIES

From casual “glamp-outs” and country barn dances to strolling the red carpet and dressing to the nines, you’ll need an extra suitcase just for your party attire!

ACTIVITIES DAY & NIGHT

Challenge your fellow cruisers to a game of ladder ball, focus your senses with adult coloring, put your factoids to the test at trivia and much more.

ONE-OF-A-KIND EVENTS

Toast s’mores by moonlight, decorate your very own Hollywood Star, dress up as your favorite celebrity or let our expert crew craft a memorable milestone soiree.

SURPRISE GIFTS

Special keepsakes? Parcels on your pillow? Delights with your dinner? Step into the unknown and expect the unexpected on an exciting Grand Voyage.



Billboard Onboard

UNPARALLELED ENTERTAINMENT

From headline performers and stand-up comedians to production shows and a host of local talent, you're sure to be mesmerized and inspired by our cultural entertainers and experts.

MUSIC CLUBS - VOLENDAM

Classic Piano Bar

String Duo

Ocean Bar Band

MUSIC CLUBS - ZUIDERDAM

Billboard Onboard

String Duo

Rolling Stone Lounge

Third Avenue West

ONLY ON THE WORLD STAGE

Comedians

Local Acts

Headline Entertainers

Production Shows



World Stage



Headline entertainers

[CLICK HERE TO LEARN MORE >](#)



Tai Chi on deck

EXPERT-LED ACTIVITIES

Expand your horizons, gain a new skill or take your passions to new heights under the guidance of our master instructors. Below are just a few of the activities on offer during your Grand Voyage.

DANCE LESSONS

Experience classic cruising at its best with our partnered ballroom dance classes or try your hand (and feet) at beginners' ballet.

ARTS & CRAFTS

Lean into your artistic side! Let your imagination run wild at a creative writing class, express yourself with watercolor paints or learn to make beautiful, intricate origami designs.

PICKLEBALL

Join in on the easy-to-learn sporting craze that's sweeping the nation! Gain access to top-of-the-line equipment and step-by-step instruction from our newly appointed sports directors.

SPORTS & ACTIVITIES

ACBL Bridge Instruction

Adult Coloring

Ballet for Beginners

Ballroom Dance

Bingo

Board & Card Games

Creative Writing

Dance to the Hits

Flower Arranging

Game Nights

Modern Brush Lettering

Origami

Painting

Polar Bear Plunge

Punch Needle Embroidery

Puzzles

Scavenger Hunts

Sport Court

Tai Chi

Team Trivia



Ballet for Beginners



Sport Court



Delicious dining



A WORLD OF FLAVOR

From all-time classic favorites to regionally inspired cuisine made with locally sourced ingredients, a Grand Voyage takes you on a culinary journey across the globe.

ELEVATED DINING EXPERIENCES

Surprises await throughout your Grand Voyage – including at the dinner table, where you’ll discover an assortment of delicious delights.

LOCAL TRADITIONS, GLOBAL FAVORITES

Enjoy a taste of your latest port stop with authentic dishes, local fresh fish and regional brands you won’t find anywhere else.

COCKTAILS & MOCKTAILS

Whether you’re a cocktail connoisseur or a total teetotaler, we’ve got you covered with mouthwatering mixed drinks and zero-proof libations.

[CLICK HERE TO LEARN MORE >](#)



Fresh local ingredients



Cocktails & mocktails



Greenhouse Spa & Salon®



RELAX & RECHARGE

Bask in secluded luxury at our outdoor Retreat or indulge in our Thermal Suite and Hydropool at the Greenhouse Spa & Salon.® While you soak in the sun, let our attentive crew bring you a cooling drink as you sit back and relax in your private sanctuary.

SPA SERVICES

- Acupuncture Services
- Couples' Treatments
- Facial Treatments
- Hair & Nail Services
- Massage & Body Therapies
- Medi-Spa Cosmetic Treatments
- Teeth Whitening
- Thermal Suite & Hydropool

WELLNESS & FITNESS

- Body Composition Analysis
- Circuit Training
- The Fitness Center
- Guided Meditation & Stretching
- Nutritional Consultation
- Pain Management Workshop
- Personal Trainers



Fitness Center



Hydropool

The Retreat is available on board *Zuiderdam*.

[CLICK HERE TO LEARN MORE >](#)



**CALL YOUR TRAVEL ADVISOR OR
WORLD CRUISE RESERVATIONS
1-800-522-3399**

CALL YOUR TRAVEL ADVISOR OR**0344 338 8605****1300 987 322****0800 724 5425****00800 1873 1873**FOR BELGIUM, LUXEMBOURG, GERMANY, AUSTRIA, SWITZERLAND,
NORWAY, DENMARK, SWEDEN, FINLAND & ICELAND

Holland America Line®

OR VISIT HOLLANDAMERICA.COM

EARLY BOOKING BENEFITS TERMS & CONDITIONS

TERMS & CONDITIONS: 2025 133-DAY GRAND VOYAGE: POLE-TO-POLE

GENERAL TERMS APPLICABLE TO ALL PARTS OF THE Grand Voyage Early Booking Benefits OFFER ("Offer(s)"): Offers are available for full 2025 133-Day *Grand Voyage: Pole-to-Pole* to 1st/2nd guests sharing a stateroom who make a new booking on select categories by June 3, 2024. Offers are based on Promo(s) W**/UK*. Amenity values vary by category booked. Offers are available on a limited basis only, are capacity controlled (regardless of stateroom availability), and may not be combined with other offers or promotions (aside from those listed herein). Other exclusions may apply; void where prohibited. Offers and their parts are neither transferable, substitutable, nor redeemable for cash. Holland America Line ("HAL") is neither responsible nor liable for any Offer errors, including printing, typography, or other errors. HAL may change or revoke Offers at any time. All values are quoted in USD. If guest booking Offer received a complimentary upgrade or is purchasing a PLUS offer, promotional or stateroom amenities are based on the non-discounted category paid, not the upgraded stateroom category. For more information about our stateroom categories and suite descriptions, to view deck plans, and for full terms and conditions applicable to your cruise, please refer to [HollandAmerica.com](#) or the appropriate Holland America Line brochure. Offer ends June 3, 2024. Ships' Registry: The Netherlands. Advertised Offer value of US\$8,800 is per person based on double occupancy and applies to the 133-Day *Grand Voyage: Pole-to-Pole* (roundtrip Ft. Lauderdale) in a Pinnacle Suite based on the following approximate values: US\$2,000 Onboard Credit; Crew Appreciation valued at US\$2,328; one complimentary shore excursion valued at US\$250 (must be selected from the Collections of Holland America Line list); luggage delivery service valued at US\$500; Surf Wi-Fi Package valued at US\$655.99; Flight Ease Air Credit valued at US\$500; roundtrip group transportation between Ft. Lauderdale airport and point of cruise's embarkment/disembarkment on the day of embarkation (January 25, 2025) and the day of disembarkation (June 7, 2025) valued at US\$38; complimentary initial liquor setup (4 bottles) valued at US\$100; and a "Welcome Aboard" bottle of sparkling wine valued at US\$21 per guest. The following amenities vary by category booked, are available throughout the entire booking window, and are valued as follows: complimentary unlimited in-suite bottled water and soft drinks valued at US\$1,117 and complimentary laundry, dry cleaning, and pressing valued at US\$798. The Grand Mariner Discount is valued at US\$500 per person and is available to guests who have previously sailed on a Holland America Line Grand Voyage. Pay in Full Saving Option: Pay in full by June 3, 2024, and save an additional 3% from the applicable fare. Applicable to full-cruise and segment-cruise guests, including 3rd/4th persons. Agent commission is based on the fare paid after all promotions are applied. **Onboard Credit ("OBC") Offer:** OBC will be applied to guest's folio account and amount varies based on stateroom type as follows: US\$2,000 per person (US\$4,000 per stateroom) for guests booked in a Pinnacle Suite (PS); US\$1,000 per person (US\$2,000 per stateroom) for guests booked in a Neptune Suite (SA-SB); US\$750 per person (US\$1,425 per stateroom) for guests booked in a Vista Suite (A-BC); and US\$500 per person (US\$800 per stateroom) for guests booked in a Lanai (CA) or Ocean View (C-F) stateroom. Limit: One (1) OBC per guest and available only for 1st/2nd guests in a stateroom. OBC is neither refundable, transferable, nor redeemable for cash and has no cash value. OBC may be used only on the cruise for which it was awarded and expires at the end of such cruise. OBC may not be used in the Casino or on other specified fees or items. **Crew Appreciation** is paid on behalf of the guest for onboard items/charges, but does not include other service charges, including, but not limited to, Crew Appreciation for bar, dining room, wine accounts and spa/salon services. **Shore Excursion:** Guest will receive one (1) shore excursion per person. Excursion is non-refundable and must be chosen from the Collections of Holland America Line list. Shore Excursion credit can neither be redeemed for cash value nor applied to a non-shore excursion item. **Luggage Delivery Service:** Delivery is available for U.S. and Canadian residents only and available only to/from your home residence to the ship in Ft. Lauderdale. HAL will deliver up to 5 suitcases/bags for guests booked in a Pinnacle (PS) or Neptune (SA-SB) Suite; up to 4 suitcases/bags for guests booked in a Vista Suite (A-BC); and up to 3 suitcases/bags for guests booked in a Lanai (CA) or Ocean View (C-F) stateroom. HAL is not responsible for luggage or items contained therein. Guests should not leave personal documents, valuables or money in luggage left for delivery. **In-suite Liquor Setup and Sparkling Wine:** Available only for Pinnacle Suite (PS), Neptune (SA-SB) and Vista (A-BC) Suites. Guest must be 21 years of age or older to receive in-suite liquor or sparkling wine. Guests under the age of 21 shall not receive any substitute beverage or item. **3% Pay in Full Discount:** Guests who pay their full cruise fare on or before June 3, 2024, receive a 3% discount off such cruise fare. Discount does not apply to Taxes, Fees & Port Expenses or any other expenses or costs. **Surf Wi-Fi Package:** Internet usage is subject to HAL's standard policies, which may limit browsing of some sites due to network security and bandwidth usage. Applications that use high bandwidth may be blocked and offerings are subject to change with or without notice. The plan can be activated on any device, but only one device can be actively connected at a time. Offer applies to 1st/2nd guests in a stateroom only. **US\$500 Air Credit** is per person for flights booked through Flight Ease. Flights are subject to availability. Air Credit must be used by the time of voyage departure. **Airport Transfers** are provided to/from the Ft. Lauderdale (FLL) airport on the day of embarkation (January 25, 2025) and the day of disembarkation (June 7, 2025) for up to two people per stateroom using standard transportation; guests flying into different airports shall not receive airport transfers. If any guest flies in earlier than the date of cruise embarkment or flies home later than the day of cruise disembarkment, then no airport transportation may be provided. Guests driving to the point of embarkment/disembarkment shall not be eligible for this part of the Offer. *As we travel across the oceans and to remote areas of the world, it's possible we may experience reduced or intermittent satellite connection. Although the high bandwidth satellite footprint is extensive, it does not cover the entire world. In some instances, our location and surrounding terrain can contribute to a slower browsing experience, partial loss of signal, or temporary outage. We thank you for your patience during these times and recommend that you log out and try back later once the ship has relocated.*

VISIT HOLLANDAMERICA.COM OR CONTACT YOUR TRAVEL ADVISOR OR PERSONAL CRUISE CONSULTANT TODAY.

TERMS & CONDITIONS: 2025 124-DAY GRAND WORLD VOYAGE

GENERAL TERMS APPLICABLE TO ALL PARTS OF THE Grand Voyage Early Booking Benefits OFFER ("Offer(s)"): Offers are available for full 2025 124-Day *Grand World Voyage* to 1st/2nd guests sharing a stateroom who make a new booking on select categories by June 3, 2024. Offers are based on Promo(s) W**/UK*. Amenity values vary by category booked. Offers are available only on a limited basis, are capacity controlled (regardless of stateroom availability), and may not be combined with other offers or promotions (aside from those listed herein). Other exclusions may apply; void where prohibited. Offers and their parts are neither transferable, substitutable, nor redeemable for cash. Holland America Line ("HAL") is neither responsible nor liable for any Offer errors, including printing, typography, or other errors. HAL may change or revoke Offers at any time. All values are quoted in USD. If guest booking Offer received a complimentary upgrade or is purchasing a PLUS offer, promotional or stateroom amenities are based on the non-discounted category paid, not the upgraded stateroom category. For more information about our stateroom categories and suite descriptions, to view deck plans, and for full terms and conditions applicable to your cruise, please refer to [HollandAmerica.com](#) or the appropriate Holland America Line brochure. Offer ends June 3, 2024. Ships' Registry: The Netherlands. Advertised Offer value of US\$8,500 is per person based on double occupancy and applies to the 124-Day *Grand World Voyage* (roundtrip Ft. Lauderdale) in a Pinnacle Suite based on the following approximate values: US\$2,000 Onboard Credit; Crew Appreciation valued at US\$2,170; one complimentary shore excursion valued at US\$250 (must be selected from the Collections of Holland America Line list); Luggage Delivery Service valued at US\$500; *Surf Wi-Fi Package* valued at US\$655.99; Flight Ease Air Credit valued at US\$500; roundtrip group transportation between Ft. Lauderdale airport and point of cruise's embarkment/disembarkment on the day of embarkation (January 4, 2025) and the day of disembarkation (May 9, 2025) valued at US\$38; complimentary initial liquor setup (4 bottles) valued at US\$100; and a "Welcome Aboard" bottle of sparkling wine valued at US\$21 per guest. The following amenities vary by category booked, are available throughout the entire booking window and are valued as follows: complimentary unlimited in-suite bottled water and soft drinks valued at US\$1,042 and complimentary laundry, dry cleaning, and pressing valued at US\$744. The Grand Mariner Discount is valued at US\$500 per person and is available to guests who have previously sailed on a Holland America Line Grand Voyage. Pay in Full Saving Option: Pay in full by June 3, 2024, and save an additional 3% from the applicable fare. Applicable to full-cruise and segment-cruise guests, including 3rd/4th persons. Agent commission is based on the fare paid after all promotions are applied. **Onboard Credit ("OBC") Offer:** OBC will be applied to guest's folio account and amount varies based on stateroom type as follows: US\$2,000 per person (US\$4,000 per stateroom) for guests booked in a Pinnacle Suite (PS); US\$1,000 per person (US\$2,000 per stateroom) for guests booked in a Neptune Suite (SA-SC); \$750 per person (\$1,425 per stateroom) for guests booked in a Signature Suite (SS-SZ); \$650 per person (\$1,140 per stateroom) for guests booked in a Verandah stateroom (VA-VH); and \$500 per person (\$800 per stateroom) for guests booked in an Ocean View stateroom (C-E). Limit: One (1) OBC per guest and available only for 1st/2nd guests in a stateroom. OBC is neither refundable, transferable, nor redeemable for cash and has no cash value. OBC may be used only on the cruise with which it was awarded in connection and expires at the end of such cruise. OBC may not be used in the Casino or on other specified fees or items. **Crew Appreciation** is paid on behalf of the guest for onboard items/charges, but does not include other service charges including, but not limited to, Crew Appreciation for bar, dining room, wine accounts, and spa/salon services. **Shore Excursion:** Guest will receive one (1) shore excursion per person. Excursion is non-refundable and must be chosen from the Collections of Holland America Line list. Shore Excursion credit can neither be redeemed for cash value nor applied to a non-shore excursion item. **Luggage Delivery Service:** Delivery is available for U.S. and Canadian residents only and available only to/from your home residence to the ship in Ft. Lauderdale. HAL will deliver up to 5 suitcases/bags for guests booked in a Pinnacle (PS) or Neptune (SA-SC) Suite; up to 4 suitcases/bags for guests booked in a Signature Suite (SS-SZ); and up to 3 suitcases/bags for guests booked in a Verandah (VA-VH) or Ocean View (C-E) stateroom. HAL is not responsible for luggage or items contained therein. Guests should not leave personal documents, valuables or money in luggage left for delivery. **In-suite Liquor Setup and Sparkling Wine:** Available only for Pinnacle (PS), Neptune (SA-SC), and Signature (SS-SZ) Suites and Verandah staterooms (VA-VH). Guest must be 21 years or older to receive in-suite liquor or sparkling wine. Guests under the age of 21 shall not receive any substitute beverage or item. **3% Pay in Full Discount:** Guests who pay their full cruise fare on or before June 3, 2024, receive a 3% discount off such cruise fare. Discount does not apply to Taxes, Fees & Port Expenses or any other expenses or costs. **Surf Wi-Fi Package:** Internet usage is subject to HAL's standard policies, which may limit browsing of some sites due to network security and bandwidth usage. Applications that use high bandwidth may be blocked and offerings are subject to change with or without notice. The plan can be activated on any device, but only one device can be actively connected at a time. Offer applies to 1st/2nd guests in a stateroom only. **US\$500 Air Credit** is per person for flights booked through Flight Ease. Flights are subject to availability. Air Credit must be used by the time of voyage departure. **Airport Transfers** are provided to/from the Ft. Lauderdale (FLL) airport on the day of embarkation (January 4, 2025) and the day of disembarkation (May 9, 2025) for up to 2 people per stateroom in standard transportation; guests flying into different airports shall not receive airport transfers. If any guest flies in earlier than the date of cruise embarkment or flies home later than the day of cruise disembarkment, then no airport transportation may be provided. Guests driving to the point of embarkment/disembarkment shall not be eligible for this part of the Offer. **Segment guests** will receive the following Onboard Credit amounts per person for 1st/2nd guests sharing a stateroom: Guests sailing on a segment voyage lasting up to 20 days will receive US\$250 per person (US\$500 per stateroom) if booked in a Pinnacle (PS) or Neptune (SA-SC) Suite; US\$250 per person (US\$475 per stateroom) if booked in a Signature Suite (SS-SZ); US\$200 per person (US\$350 per stateroom) if booked in a Verandah stateroom (VA-VH); and US\$150 per person (US\$240 per stateroom) if booked in an Ocean View stateroom (C-E). Guests sailing on a 21+ day segment voyage will receive US\$500 per person (US\$1,000 per stateroom) if booked in a Pinnacle (PS) or Neptune (SA-SC) Suite; US\$500 per person (US\$950 per stateroom) if booked in a Signature Suite (SS-SZ); US\$400 per person (US\$700 per stateroom) if booked in a Verandah stateroom (VA-VH); and US\$300 per person (US\$480 per stateroom) if booked in an Ocean View stateroom (C-E). Grand Mariner Discount amount for segment voyages is dependent on voyage length (up to US\$200 value). **3% Pay in Full Discount:** Guests who pay their full cruise fare on or before June 3, 2024, receive a 3% discount off such cruise fare. Discount does not apply to Taxes, Fees & Port Expenses or any other expenses or costs. **Surf Wi-Fi Package:** Internet usage is subject to HAL's standard policies, which may limit browsing of some sites due to network security and bandwidth usage. Applications that use high bandwidth may be blocked and offerings are subject to change with or without notice. The plan can be activated on any device, but only one device can be actively connected at a time. Offer applies to 1st/2nd guests in a stateroom only. *As we travel across the oceans and to remote areas of the world, it's possible we may experience reduced or intermittent satellite connection. Although the high bandwidth satellite footprint is extensive, it does not cover the entire world. In some instances, our location and surrounding terrain can contribute to a slower browsing experience, partial loss of signal, or temporary outage. We thank you for your patience during these times and recommend that you log out and try back later once the ship has relocated.*

TERMS & CONDITIONS

RESERVATIONS

Accommodations are limited. If you use a travel agent/travel agency ("TA") to book your reservation, you shall pay deposits and payments for Holland America Line's ("HAL") services to such TA. HAL will only issue travel documents if and when it has received full payment from TA. HAL will only make any refunds to the applicable TA based on the amount HAL actually received, less any applicable cancellation fees and charges; guest is responsible for obtaining any refund monies from TA.

DEPOSIT & FINAL PAYMENT REQUIREMENTS

First deposit is required within five days after the cruise booking. Second deposit is due by June 3, 2024. Final payment of balance must be received no later than 120 days prior to departure.

CANCELLATIONS

Our cancellation policy allows you to cancel your 2025 Grand Voyage up to 120 days prior to departure and receive a full refund. If you cancel your 2025 Grand Voyage within 119 days, you are required to pay a cancellation fee (including 3rd and 4th berths) as set forth below. Such fees are based on the fare paid, excluding Taxes, Fees & Port Expenses ("TFPE"); transfers; surcharges; shore and land excursions; and most pre-purchased gift(s) and/or special service(s). See more details in the [Cruise Contract](#). For 2025 Grand Voyages, the amount of cancellation fees varies based on the timing of cancellation as follows:

2025 GRAND VOYAGES	
Number of Days Before Commencing Travel That Guest Cancels Cruise	Amount of Cancellation Fee
119-91	Amount equal to deposit requirement
90-76	60% of gross fare
75 or less	100% of gross fare

Change to arrangements may be subject to change charges.

CREW APPRECIATION & SERVICE CHARGES

For your convenience, a Crew Appreciation will be automatically added to your onboard account to recognize the efforts of a wide variety of crew members in various departments, including those in the Dining, Entertainment, Guest Services, and Galley areas. The amount of the Crew Appreciation is based on your stateroom category and is subject to adjustment at your discretion, except as otherwise provided in the Crew Appreciation and Service Charge Policy. A Service Charge will be automatically added to optional purchases of beverage packages, drinks, dining room and specialty dining, onboard parties, and other services or amenities provided to guests that are not included in the Cruise Fare. The Crew Appreciation and Service Charge payments on all vessels in our fleet are pooled and distributed in the form of compensation, including bonuses. For further details, please review our [Crew Appreciation and Service Charge Policy](#).

TAXES, FEES & PORT EXPENSES

"Taxes, Fees & Port Expenses," or "TFPE" as used by HAL, may include any and all fees, charges, tolls, and taxes imposed on HAL by governmental or quasi-governmental authorities, as well as third-party fees and charges arising from a vessel's presence in a harbor or port. TFPE may be assessed per guest, per berth, per ton, or per vessel. TFPE are subject to change, and HAL reserves the right to collect any increases in effect at the time of sailing even if the fare has already been paid in full. Advertised fares include Taxes & Fees.

GUESTS WITH DISABILITIES

Holland America Line seeks to accommodate the needs of guests with disabilities, to the extent feasible. Some accommodations require advanced notification. For more information, visit the [Accessible Cruising section](#) of our website.

MEDICAL SERVICES

Each of our ships is equipped with limited medical facilities that are staffed by a physician and registered nurses. Unless otherwise indicated in an active HAL policy (for example, the COVID-19 Protection Program), guests will be charged a fee for all medical services and medications obtained on board. If the onboard physician is unable to care for your needs on board, you will be transferred to medical facilities on shore. If your condition will require that you have special medical apparatus or assistance on board, we must be made aware of that at time of booking in order to determine whether we can accommodate your needs.

PASSPORTS / VISAS / IMMUNIZATIONS

You are solely responsible for securing and having available all proper documentation for the countries visited on your cruise or land tour and for bringing all necessary travel documents such as passports, visas, proof of citizenship, re-entry permits, minor's permissions and medical certificates showing all necessary vaccinations. Guests should check with their TA or the appropriate government authority to determine the necessary documents. Guests will be refused boarding or disembarked without recourse or liability for refund, payment, compensation, or credit of any kind if they do not have proper documentation, and they will be subject to any fine or other costs incurred by HAL that result from improper documentation or noncompliance with applicable regulations.

RESPONSIBILITY

All HAL vessels are owned by HAL Antillen N.V. and operated by Holland America Line N.V. in its capacity as general partner of Cruiseport Curaçao C.V. Transportation aboard the ship is provided solely by the Shipowner and Operator and pursuant to the [Cruise Contract](#) that you will receive prior to embarkation. Ships' Registry: The Netherlands.

Non-Holland America Line services (for example, shore excursions) are generally performed by independent contractors. These non-Holland America Line services are solely at your risk and subject to the terms or arrangements with the independent contractor. HAL assumes no responsibility with respect to these non-Holland America Line services (including cancellation, injury, or death) even though HAL may collect monies or make bookings.

ACCURACY OF CONTENTS / GENERAL

Contents of this brochure are subject to change at any time at the sole discretion of HAL. Please refer to [hollandamerica.com](#) for up-to-date information. Any advertised offer may be changed or revoked at any time. Situations may arise which, in our opinion, make it necessary for us to cancel, advance or postpone a scheduled departure; change itineraries; or make substitutions involving hotels, restaurants, ports of call, other travel components, vessels or other modes of transportation. In that event, we do not assume responsibility or liability for any resulting losses, expenses or inconvenience. We are not required to make refunds once travel commences, regardless of the reason for guests being unable to complete their travel.

THE ANTARCTICA EXPERIENCE

Exact itinerary in Antarctica will depend on permissions, ice, weather conditions and time available. There will be no landings in Antarctica. Visits by cruise ships to the Antarctic require government approval. Holland America Line has obtained government approval for this cruise. There remains the possibility, however, that this approval could be withdrawn if a change is made in applicable governmental requirements.

The ship names and all other trademarks, slogans, logos and imagery used herein are, whether or not registered, owned by Holland America Line N.V.

All guests will be required to agree to the [Cruise Contract](#) and all information and terms therein.

BEST PRICE GUARANTEE | SHORE EXCURSIONS

UNIQUE SHORE EXCURSIONS

Whatever lights up your world, a Holland America Line shore excursion helps you connect deeply with the people and places you visit. Guests who pre-book shore excursions are guaranteed the lowest rates on comparable shore excursions, or Holland America Line will gift them an Onboard Credit worth 110% of the price difference.*

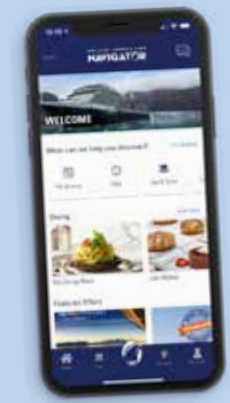
GROUP EXCURSIONS

Holland America Line's dedicated Group Shore Excursions Team proudly offers custom shore excursions perfectly crafted to groups' needs and interests, including art, architecture, history, nature — even shopping! Contact us at HAL_Group_Shore_Excursions@HollandAmerica.com for more information or to book a group.

CITY STAYS

Offering a seamless experience ashore, City Stays and Pre/Post Overland Tours make it easy to explore more before or after a cruise.

✦ Best Price Guarantee is not valid for shore excursions in Asia.



**HOLLAND AMERICA LINE
NAVIGATOR**

**DOWNLOAD THE
NAVIGATOR® APP**

The Holland America Line Navigator® App is your indispensable tool for cruise planning, essential updates, embarkation, managing your onboard experience and booking shore excursions.

Pricing Made Easy | All taxes and fees now included in cruise fares.